

MA House Redistricting Impact on Wenham

- Wenham will be split in two for the new Massachusetts House Congressional Districts
 - Per State feedback – no opportunity to change
- Wenham will Basically be split along Main Street, with some small deviations towards the Hamilton line (down Perkins and Porter)
 - “West Wenham” will be put into the 13th Essex along with Danvers, and parts of Topsfield, Middleton, and Peabody
 - “East Wenham” will be put into the 6th Essex along with Beverly.
- MA State Elections is providing an “opportunity” for towns to adjust precincts to align with the new districts to “ease” election processing across all elections. The deadline to make this change is December 15th. **(However, I have to notify the Census Devisiion by Dec 13th in order for them to post meeting notice scheduled for Dec 15th)**
 - Allow Wenham to establish 2 precincts, or
 - Remain 1 precinct, with 2 sub precincts (this will be the minimum option required)

Town of Wenham



DRAFT



Map Prepared for the Town of Wenham
 Courtesy of William F. Galvin, Census Liaison
 Secretary of the Commonwealth

2020 Population -- 4,979

Minimum 5%	Target Population	Maximum 5%
2365	2,490	2,615

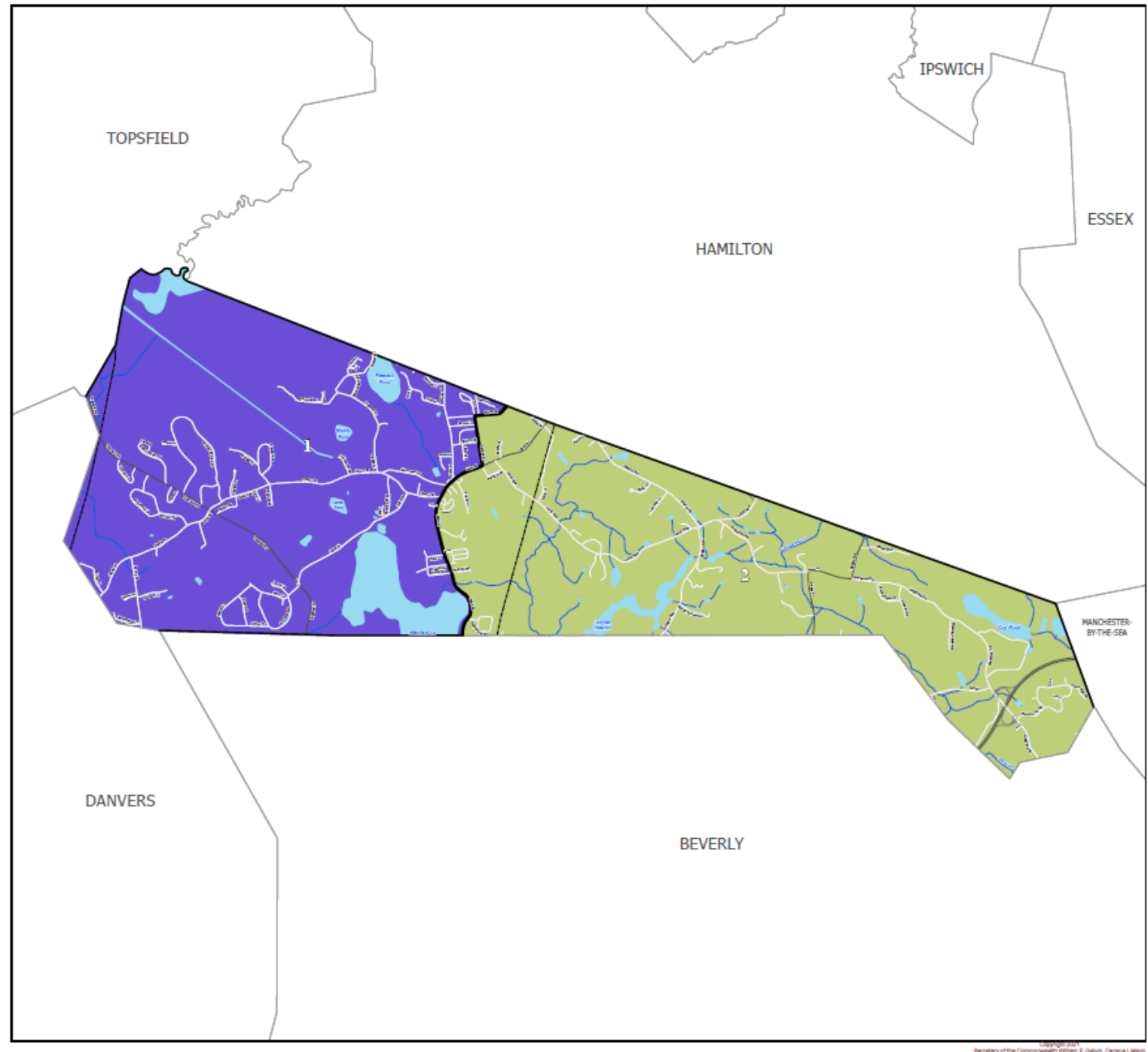
Precinct Boundaries Wenham

Precinct	2020 Population	Variance
1	2,473	-0.68
2	2,506	0.64

Population is based on the official U.S. 2020 Census block-level data.
 Boundaries effective December 31, 2021

Legend

- Final House Plan Shapefile
- Municipal Boundary
- Geographical Features**
- Major Road
- Local Road
- Railroad
- Other Municipal Features
- Streams, Rivers
- Coastal Water, Lakes, Ponds, Major Rivers



New Precinct Options for Wenham

4yr Period - 4 Town Elections, 1 Presidential Primary, **2 State Primaries, 1 State Election, 1 State/Presidential Election**

1 Precinct, 2 Sub Precincts

- Local Elections and Presidential Primary
 - Could still operate as single Precinct
- State Primaries, State/Presidential Elections
 - Will require two separate set-ups and ballots
- Voters will have current experience in the Local Elections and Presidential Primary
- Voters would have a different experience for the State Primaries & State/Presidential Elections
- Costs will be around 45% higher than today (4 of 9 elections will be two ballots, etc.)

2 Precincts

- All Elections require two separate set-ups
 - Almost double staffing
 - Two Check In Tables
 - Two Ballot Boxes
 - May require different venue than Town Hall for busier State Elections
- Voters will have same experience in all elections
- Costs will basically be almost doubled from today

Notes:

Wenham currently has 2 tabulators/2 ballot boxes and 2 poll pads that can handle either scenario. At some point, we may need to purchase one tabulator/one ballot box and 1 poll pad for backup should something happen to either equipment on Election Day.

The precincts go into effect December 31st. The districts go into effect January 2023, when the new officials are sworn in.

State law only allows for re-precincting to happen every 10 years. After our choice is made, we are locked into the plan until 2031.

The number of voters isn't relevant to the district or precinct line drawing. The lines must be based on population numbers.