

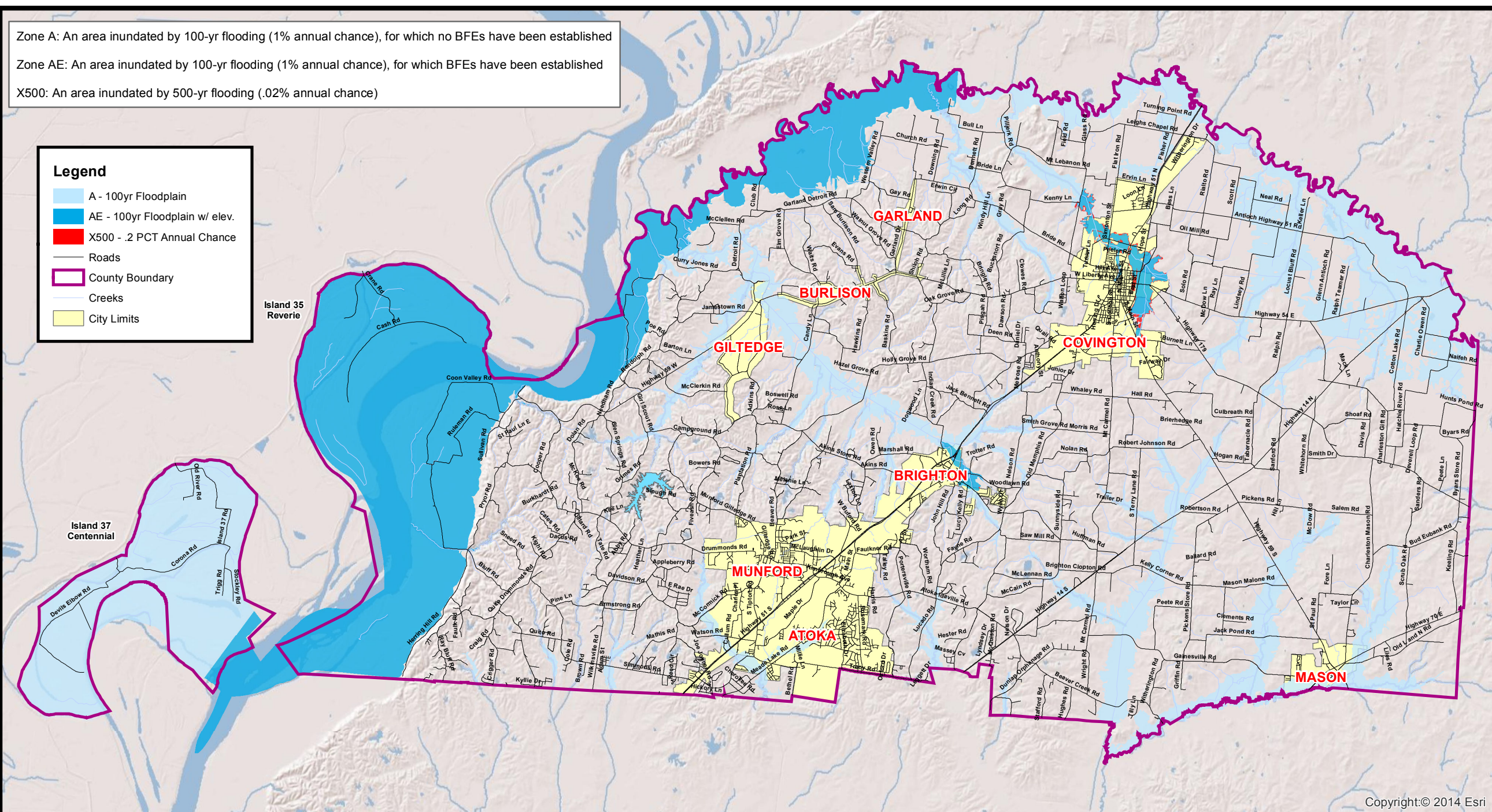
Zone A: An area inundated by 100-yr flooding (1% annual chance), for which no BFEs have been established

Zone AE: An area inundated by 100-yr flooding (1% annual chance), for which BFEs have been established

X500: An area inundated by 500-yr flooding (.02% annual chance)

Legend

- A - 100yr Floodplain
- AE - 100yr Floodplain w/ elev.
- X500 - .2 PCT Annual Chance
- Roads
- County Boundary
- Creeks
- City Limits



Copyright:© 2014 Esri

TIPTON COUNTY 2009 FLOOD ZONES

Tipton County GIS

TIPTON COUNTY GIS MAKES NO WARRANTY, EXPRESS OR IMPLIED, NOR ANY GUARRANTIES TO THE CONTENTS, SEQUENCE, ACCURACY, TIMELINESS OR COMPLETENESS OF ANY OF THE INFORMATION PROVIDED. TIPTON COUNTY GIS ASSUMES NO LIABILITY FOR ANY ERRORS OR OMISSIONS. THE USER ASSUMES ALL LIABILITY FOR ANY DAMAGE OR LOSS OF DATA OR INFORMATION. THE USER ASSUMES ALL LIABILITY FOR ANY DAMAGE OR LOSS OF DATA OR INFORMATION. THE USER ASSUMES ALL LIABILITY FOR ANY DAMAGE OR LOSS OF DATA OR INFORMATION. THE USER ASSUMES ALL LIABILITY FOR ANY DAMAGE OR LOSS OF DATA OR INFORMATION.

0 3 Miles

Map Created On: 4/18/2016
Tipton County GIS Department