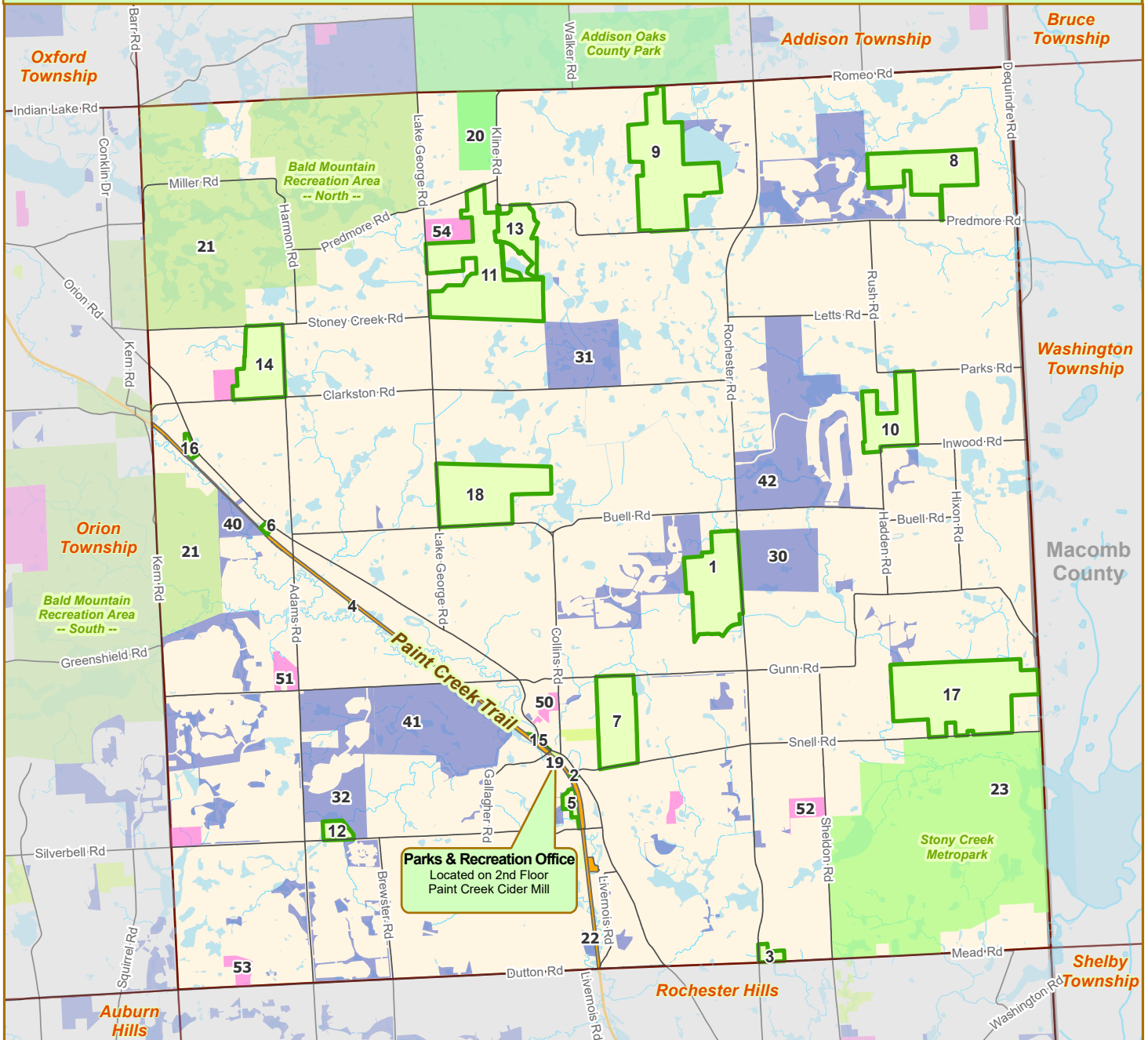


Parks and Recreation Opportunities in Oakland Township



Oakland Township Parks and Recreation Facilities

Conservation Areas

1. Blue Heron Environmental Area
2. Mill Creek Crossing
3. O'Connor Nature Park
4. Paint Creek Heritage Area- Fen
5. Paint Creek Heritage Area - Wet Prairie
6. Paint Creek Trail Parcel

Community Parks & Recreation Facilities

7. Bear Creek Nature Park
8. Charles Ilsley Park
9. Cranberry Lake Park
10. Draper Twin Lake Park
11. Fox Nature Preserve
12. Gallagher Creek Park
13. Lost Lake Nature Park
14. Marsh View Park
15. Mill Race Trail
16. Paint Creek Junction
17. Stony Creek Ravine Nature Park
18. Watershed Ridge Park
19. Paint Creek Cider Mill (Parks & Rec Office)

Other Parks and Recreation Facilities

Other Public Parks

20. Addison Oaks County Park
21. Bald Mountain State Recreation Area
22. Paint Creek Trail
23. Stony Creek Metropark

Other Public Recreation Facilities

30. Blackheath Golf Club
31. The Myth Golf Club
32. Westwynd Golf Club

Private Recreation Facilities

40. Royal Oak Archers
41. The Wyndgate Golf Course
42. Twin Lakes Golf & Swim Club

Public Schools

50. Baldwin Elementary School
51. Delta Kelly Elementary School
52. Hugger Elementary School
53. Musson Elementary School
54. Oakview Middle School

Key to Features:

- Municipal Boundary
- Lakes & Ponds
- Paint Creek Trail
- Private Recreation
- Major Roads
- Streams & Rivers
- Public Recreation
- Public School

0 0.5 1 2 Miles



Last Update: 8/5/2022