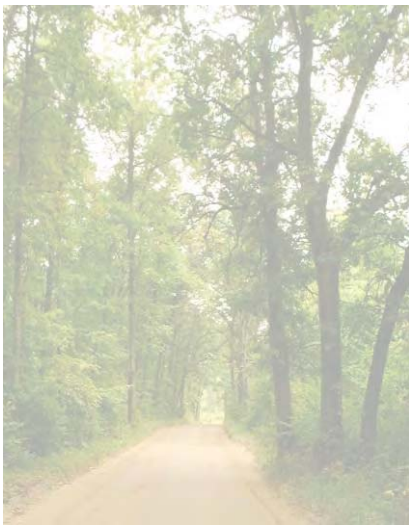

Grosse Ile Township Parks and Recreation Master Plan

2011-2015

(Adopted February 28, 2011)



baseball basketball soccer football trails parks slide playground recreation tennis boating
fishing nature bike path hiking picnics neighborhoods equestrian farm garden camping
dog park open space conservancy baseball basketball soccer football trails parks slide
playground recreation tennis boating fishing nature bike path hiking picnics
neighborhoods equestrian farm garden camping dog park open space conservancy
baseball basketball soccer football trails parks slide playground recreation tennis boating
fishing nature bike path hiking picnics neighborhoods equestrian farm garden camping
dog park open space conservancy baseball basketball soccer football trails parks slide
playground recreation tennis boating fishing nature bike path hiking picnics
neighborhoods equestrian farm garden camping dog park open space conservancy
baseball basketball soccer football trails parks slide playground recreation tennis boating





Community Recreation Commission Endorsement: January 27, 2011

Township Board Adoption: February 28, 2011

Community Recreation Commission

Ute O'Connor, Board Liaison
Walter Kacher, Chairman
Bill Morreau, Vice Chairman
E. Lea Schelke, Secretary
Rubina Mustafa
Robert Wischer
Ethel Yops
Greg Meyring
Sarah Gilroy
John Conroy

Township Staff

Dale Reaume, Township Manager
Tim Rooney, Recreation Superintendent

Township Board of Trustees

Brian Loftus, Supervisor
Ute O'Connor, Clerk
Ted Van Os, Treasurer
Pam Frucci
Jim Johnson, Jr.
Peter Kantz
Erik Ranka

Planning Consultants

LSL Planning, Inc.



Russell Design





1 Introduction 1-1

2 Planning and Administration 2-1

Planning Process 2-1
Administrative Structure..... 2-3
Budget and Funding 2-8

3 Recreation and Resource Inventory 3-1

Public Parks and Facilities 3-2
 Map One Public Parks and Open Space 3-3
Semi-Public Parks and Facilities 3-9
Public School Parks and Facilities 3-10
Private Parks and Facilities 3-11
Regional Parks and Facilities 3-13
 Map Two Regional Parks 3-16
Township Recreation Programs 3-17
Volunteer Organizations and Service Clubs 3-21

4 Basis for Action Program 4-1

Public Input 4-1
Parkland Analysis 4-3
Facilities Analysis 4-5
Programming Analysis 4-10
Other Planning Resources 4-12



5 Action Program 5-1

Action Plan Framework..... 5-2
Guidelines 5-2
Bike Path and Trail Plan 5-5
 Map Three Bike Path and Trail Plan..... 5-7
Park Specific Recommendations..... 5-8
 Airport Recreation Area Concept Plan..... 5-9
 Centennial Farm Concept Plan 5-11
 Water’s Edge Recreation Area Concept Plan..... 5-14
Programming Recommendations 5-15
Five Year Action Program..... 5-16

Appendix A Community Description A-1

Regional Setting A-1
Historical Overview A-2
Socioeconomic Characteristics A-3
Physical Characteristics..... A-6

B Public Involvement & Adoption Information B-1

Focus Groups..... B-2
Park Workshops B-2
Public Review B-2
Public Hearing..... B-2
Community Recreation Commission Resolution of Adoption..... B-3
Township Board Resolution of Adoption..... B-4
Transmittal Letters..... following B-4

C Funding Sources C-1





1: Introduction

Grosse Ile is a unique island community within the Detroit River in Wayne County. The Township has much to offer residents including high quality neighborhoods and significant natural features. Parks and recreation services enhance a community's quality of life. With the Grosse Ile Township Parks and Recreation system, residents enjoy the benefits of a local park system coupled with diverse recreational programming. Schools, private businesses, and County, State and regional parks all add to the parks and recreation choices available to residents. In order to maintain and improve the quality of life for its residents, the Township takes an active role in the delivery of recreation opportunities.

The Recreation Master Plan discusses recreation facilities throughout the community, including private and quasi-public facilities, but analyzes only those in control by the Township. The purpose of the Plan is to guide Township officials when making decisions about future development and improvement of the Township's facilities and programs.



The previous Recreation Master Plan was adopted in 2005, and created the basis of this plan. This 2010 update includes an evaluation of parks, facilities and programming to update the Township's action plan and determine where future improvements should be made. Consideration is given to the State of Michigan's Department of Natural Resources and Environment's (MDNRE) guidelines for development of parks and recreation master plans, which requires a five-year cycle for recreation planning.

The Plan is divided into separate sections that represent the planning process used in its development. In addition to this Introduction the Plan contains:

- **Planning and Administration.** Identifies the planning process, recreation budget and grant history, and the entities responsible for administration of the park and recreation programs and facilities.
- **Recreation and Resource Inventory.** Describes the specific parks, facilities and programs provided in and around the Township.
- **Basis for Action Program.** Analyzes the programs and facility needs for Grosse Ile.
- **Action Program.** Identifies the Plan's goals, objectives, recommendations and a 5 year plan for investment.
- **Appendices.** Four appendices are included to supplement the Plan including:
 - **Community Description.** An overview of the Township's current and projected social, physical and economic characteristics.
 - **Public Involvement.** A summary of comments heard at the public meeting and documentation of the public meeting, review period, and public hearing.
 - **Funding Sources.** A summary of potential funding options to pursue implementation of the Action Program.
 - **Adoption and Transmittal Information.** Documentation of the Plan's adoption and submission to required agencies.

This document creates a solid foundation for future park and recreation improvements, investments, and policies that support a healthy, desirable quality of life for Grosse Ile residents.





The ability to plan and accommodate parks and recreation in Grosse Ile involves different aspects. First, the Township emphasizes a consistent planning process in order to solicit ideas and public comments. This process was followed in preparing this plan and is used on a regular basis in order to monitor programs and facility needs. The Township also has an administrative structure that establishes the roles of staff and the Township's appointed and elected bodies to ensure an organized hierarchy is utilized during planning and implementation. Finally, Grosse Ile has a separate budget for parks and recreation to allocate money from the general fund to manage parks and recreation spending.

Planning Process

The Township's Community Recreation Commission (CRC) directed the update of the Parks and Recreation Master Plan. The participatory process resulted in a Plan that reflects the needs and ideas of those who make use of the Township's parks and recreation facilities. The planning process is discussed below.

Task One Community Description

The process began with an update to the Township's physical and social characteristics. These features include location, land use, natural features, and a description of the transportation network as well as population features including the age/sex distribution, people with physical disabilities, types of households, employment and income.



Task Two Recreation Inventory

The recreation inventory included site visits and written descriptions of recreation facilities in the Township including public parks, schools, and private facilities. The information included acreage, barrier-free accessibility, types of equipment and other descriptions of the physical attributes. A list of State Parks, Wayne County Parks, Huron-Clinton Metroparks, and private businesses within a short distance of Grosse Ile is also included.

Task Three Public Participation

The CRC hosted a series of focus group meetings and two park specific meetings to gain input from the general public. In addition to the focus groups and park specific meetings, the Community Recreation Commission held a general public input session. During the session, residents were invited to share their thoughts and suggestions on recreation facilities, programs and services. A list of comments received is included in *Chapter 4, Basis for Action Plan*. A public hearing was held by the Township Board before adoption, details of which are contained in *Appendix B Public Involvement*.

At the request of the Community Recreation Commission, the Grosse Ile Cable Department created a link to the “Community Parks and Recreation Master Plan” on the Township web page. This link provided an immediate source to the public for updates on the planning process and the opportunity to contribute.

Task Four Analysis

Based on the data collected from tasks 1 through 3, information was analyzed in accordance with national and state standards and guidelines, local needs, the experience of commissioners, staff and consultants, the desires of the residents, and potential funding sources.

Task Five Action Program

Upon completion of the analysis, goals and objectives were determined to provide guidance for the development of the Action Program. This created the five-year plan and offers a checklist of what action is to be accomplished, when and where it will occur, who will accomplish it, how much it will cost, and potential funding sources.



Task Six Plan Completion and Adoption

Once consensus was reached amongst Township officials, a public hearing was held to present the plan and to solicit public input prior to adoption. The Plan was available for public review for one month prior to adoption. Based on public comments, the Plan was revised and the document was endorsed by the CRC, Planning Commission and adopted by the Township Board. See *Appendix D Adoption and Transmittal Information* for adoption documentation.

Administrative Structure

Community Recreation Commission

The first Grosse Ile Recreation Commission was created under Ordinance 163 in 1987. In 2005 the Township Board voted to reorganize and consolidate the Recreation Department and the Water's Edge Golf and Country Club and their respective Commissions. As a result, the Township Board disbanded the former Recreation Commission and the former Water's Edge Commission to create one merged Community Recreation Commission (CRC).

The CRC is comprised of nine individuals appointed by the Township Board, in addition to a Board member who acts as a liaison and the Recreation Superintendent, who is a non-voting member. In October 2010, the CRC invited a local high school student to serve on the commission as a Youth Representative in a non-voting capacity. The Youth Representative will provide input and advice from a wide and diverse spectrum of youth on issues affecting and concerning the teen population of the Township. The CRC will study options how the youth leadership experience through the Youth Representative position might be enhanced by elevating the youth voice to a more formal level that would include voting. General duties of the CRC are as follows:

- Act as an advisory commission to the Township Board.
- Consider, study, and make recommendations relative to the development of new programs and for improvements to existing programs.
- Recommend proposals for the use and/or improvement of the properties within its charge.
- Collaborates with other Township Commissions and committees, community groups and organizations, and the general public toward achieving community recreation goals.
- Performs such other acts and duties in connection with the operation of its programs as authorized or directed by the Township Board.



Recreation Department

The Community Recreation Department for Grosse Ile Township employs four full-time positions and several seasonal part time positions. The Department also employs approximately 40 contract workers to help in the delivery of recreational programs.

The Recreation Superintendent is a full-time position under the general supervision of the township manager, but is ultimately accountable to the Township Board. The Superintendent, with the advise and input of the CRC, is responsible for assessing, developing, implementing and coordinating all aspects of the community-wide recreation program. This includes budgeting, program development, public relations, promotion, facility and equipment needs and staff management. The Superintendent also works closely with many outside departments, organizations and volunteer groups to encourage a wide variety of recreational opportunities for the Township. The Superintendent supervises the following staff members:

Regular Staff - Year Round

Office Coordinator	Full Time
Enrichment Coordinator	Full Time
Golf Course Maintenance Lead/Mechanic	Full Time

Part Time - Year Round

Support Staff Person (Programs & Services)	Part Time
Support Staff Person (Maintenance)	Part Time

Part Time - Seasonal

Golf Course Maintenance Grounds	Part Time
Aquatic Coordinator and Supervisor	Part Time
Lifeguards	Part Time
Pool and Pro Shop Attendants	Part Time
General Facility Maintenance	Part Time

Department of Public Services (DPS)

In 2005, the Township Board merged the Road Committee with the Department of Public Works Commission, resulting in the Public Services Commission. With the merger, the Department of Public Services (DPS) Manager, under the direction of the Public Services Commission, is responsible for coordinating the maintenance and improvement of the bike path network.



A primary recreation function of the Department of Public Services Commission is to oversee the needs and conditions of the Township's John Neidhart Memorial Bike Path Network. The DPS Commission makes recommendations to the Township Board for possible additions, improvements and maintenance to the bike path network.

In the spring of 2010, the Township Board created a Bike Path Sub-Committee under the direction of the Department of Public Services. A member of the Community Recreation Commission was appointed to serve on the committee. In the future, the DPS Commission will study and consider expanding the focus of the Bike Path Sub-Committee by creating multi-disciplinary Bicycle/Pedestrian committee based on final approval by the Township Board. The Bicycle/Pedestrian Committee's will be able consider other types of non-motorized facilities in addition to bike paths. In many cases (costs, likely users, or right-of-way) concerns may make other facility types such as sidewalks, bike lanes, shared lanes (sharrows), or bike boulevards more appropriate and/or feasible.

Throughout the year, the DPS provides staff and equipment in support for special recreation maintenance projects and community-wide events. DPS support during the annual IslandFest and at the Centennial Farm compliments the operations of the Recreation Department.

Public School District

The Recreation Department has a strong partnership with the Grosse Ile Public School District. The Department works closely with the Superintendent's and Business Manager's Office, as well as the Grounds and Maintenance Staff. The Department relies heavily on the school facilities to conduct many of the Townships active recreation programs. When public school facilities are not being used by the Educational Program or for other school activities, the School Board gives first consideration to the Township Recreation Department. The Department coordinates with other youth and sports associations to promote the maximum use of these facilities. The Department also provides liability insurance for the school properties during Recreation Department activities/events. This established arrangement provides a solid working relationship between the Recreation Department, public schools and outside associations.

Other Committees, Commissions and Groups

In addition to the groups and departments listed above, a number of other Township departments and groups cooperate to aid in the delivery of activities and management of the parks and programming. Groups that coordinate to provide recreation in Grosse Ile include:



- **Planning Commission.** The Planning Commission plays a limited role in recreation planning and development. The Commission is the avenue for the Township to rezone property for recreation purposes and the Planning Commission reviews site plans for new recreation facilities or significant improvements to existing facilities.
- **Festival Commission.** The Festival Commission, established in 1998, consists of nine members including a Township Board Liaison. The Recreation Superintendent serves the Commission by coordinating administrative support and assistance from other Township departments. This Commission is responsible for establishing an annual event promoting the economic, social, cultural and recreational welfare of Grosse Ile Township. They provide coordination, direction and oversight of annual Township-sponsored festivals and any other special events approved by the Township Board.
- **Open Space/Greenways Committee.** The mission of the Committee is to protect the quality of life for the residents of Grosse Ile by maintaining the natural beauty and semi rural ambience of the community. The Committee provides recommendations on possible land acquisitions to the Township Board. In 1999, the Committee compiled a Greenway Management Plan and an Open Space Inventory for the Township. The Plan gives recommendations on the proper care and maintenance of the acquired open space. The Committee is composed of representatives from the Township Board, Grosse Ile Nature and Land Conservancy, Beautification Committee, Planning Commission and residents at large. In 2009, a member of the Community Recreation Commission was appointed to this committee as a permanent liaison
- **Island Beautification Committee.** The Grosse Ile Beautification Committee was established in 1975 as an arm of the Grosse Ile Board of Trustees to help promote beautification and litter abatement in the Township. The Committee is a hands-on, low budget group whose primary goal is to make a noticeable difference. The Committee focuses on programs, projects and activities that help enhance the beauty of the community. The Committee cooperates with other Township committees and commissions and accepts functions and responsibilities as requested by the Township Board.
- **Grosse Ile Nature and Land Conservancy.** The Grosse Ile Nature and Land Conservancy is non-profit organization established by island residents in 1993. Its mission is to preserve significant land and water resources in perpetuity. Through direct purchase or donations, the Conservancy has acquired ownership or assumed stewardship of several environmentally significant properties including Hennepin Marsh, 40 acres on Gibraltar Bay (owned by the EPA), and Stony Island. The Conservancy works closely with the Recreation Department to coordinate and promote outdoor education programs, summer camps and land resources. The



Conservancy also makes their significant properties available to youth groups for educational outings. The Conservancy's administrative office is located at Centennial Farm Park.

- **Grosse Ile Alliance for the Arts.** The Alliance's mission is to create opportunities for experiencing the arts, supporting scholarships for second-year college students studying the arts and cooperating with other Grosse Ile and Downriver groups in the promotion of the arts. The Alliance also supports the Macomb Street Business District by coordinating art related activities throughout the year. The Alliance's Sunday Concert Series has been a major attraction to the Macomb Street area during the summer months. They also hold a major fundraising event during the community's annual festival each June.
- **Grosse Ile Educational Foundation.** The Foundation is a volunteer, non-profit organization committed to funding life-long educational experiences for students and families on Grosse Ile. The Foundation does this by financially supporting creative and exemplary educational opportunities through the school district and the community. In addition to school programs and facilities, the foundation is extremely generous in supporting community organizations. A foundation grant was a major source of funding for the development of the children's garden at the Centennial Farm. The Foundation was also a major contributor for the renovation of the community auditorium located at the high school, which is frequently used throughout the year by many community groups in addition to traditional school activities.
- **Grosse Ile Municipal Airport Commission.** The Grosse Ile Airport Commission provides facilities for a variety of community events throughout the year, including the community's annual IslandFest, which is a three-day festival held at both indoor and outdoor facilities. Airport personnel are very supportive in the overall coordination of the festival and other community oriented activities held at the airport.
- **The Grosse Ile Youth Recreation Association (GIYRA), Grosse Ile Soccer Association (GISA) and Grosse Ile Islander Hockey Association (GIHA).** The Grosse Ile Youth Recreation Association (GIYRA) and the Grosse Ile Soccer Association (GISA) are two volunteer groups that provide quality recreational sports and programming for the youth of Grosse Ile Township. The Recreation Department assists GIYRA and GISA with items such as meetings, maintenance of facilities, promotion and fundraising events. GISA offers spring and fall soccer programs for both boys and girls ages 5 to 14 years (approximately 400 to 500 youth per season). GIYRA offers additional recreation activities by providing baseball, softball, football, basketball and cheerleading programs. These programs cater to different skill levels and age groups varying from 5 to 17 years old. The Grosse Ile Islander Hockey Association (GIHA) provides hockey opportunities for Township youth ranging from age 3 through 16.



- **Grosse Ile Garden Club (GIGC).** The GIGC is one of the oldest volunteer community groups in the Township, organized in 1927. The goal of the Club is to foster individual and community interest in gardening and to protect, conserve and beautify Grosse Ile Township. They have a wide variety of activities, continuing projects, and programs including plantings at the Free Bridge, 4 Corners, and the Customs House, the Wildlife Sanctuary Garden Tour, the Biannual Flower Show, the Annual Festival and educational speakers and programs to enhance gardening knowledge.
- **Herb Society.** The Grosse Ile Herb Society's purpose is to help the community learn and experience the value of nature and herbs. The Herb Society maintains gardens at the Historical Museum and Centennial Farm. Each May, the Society hosts the annual Herb Fest at the Centennial Farm. The festival features a giant plant sale, a marketplace, herbal tastings, garden gifts, exhibitors and children's activities. This event attracts visitors from all over the region. The Society also provides garden tours to school groups, scouts and community organizations and participates in other island festivals such as IslandFest and Harvest Fest.
- **Volunteer Participation.** Grosse Ile Township Recreation Department encourages the participation of volunteers in the recreation program. In the past, it has been noted that volunteer involvement has greatly enhanced the quality of the Township's recreation programs. Former volunteers have shown a sincere interest in the successful operation of the leisure time facilities and programs of the community. In 2006 and 2008 respectively, the Community Recreation Commission created the Marina and Golf Sub-Committees. Based on the tremendous success of these two committees, the commission followed with the creation of the Centennial Farm Sub-Committee in 2010. The sub-committees support the commission with facility maintenance, safety and accessibility projects, communication with the public, and developing programs and services.
- **Grosse Ile Downtown Development Authority.** More recently, the Township's Downtown Development Authority (DDA) has been helping to fund certain recreation projects. It has been working with the Recreation Department on a plan for the Macomb Pocket Park and participates in the IslandFest and other activities.

Budget and Funding

Budget expenditures and revenues for the Recreation Department were collected for the current and past three fiscal years. The Recreation Fund and Historical Farm Fund are the two main sources of monies utilized for the Department budget. The following information outlines the revenues and expenditures for the Township Recreation Department.



The Recreation Department manages four separate funds each having their own source of revenue and their own expenditures. The past years budget and planned budget for each are described below. The total budget for 2010-2011 is \$1,149,016 which is divided amongst the four funds as follows:

- Recreation Fund 2010-2011 Budget: \$503,706
- Water’s Edge Fund 2010-2011 Budget: \$457,168
- Historical Farm Fund 2010-2011 Budget: \$145,997
- Festival Commission Fund 2010-2011 Budget: \$42,145

Other millages for recreation-related items such as open space and bike paths are managed by the Township Board.

Recreation Fund

Table 2-1 Recreation Fund Budget outlines actual revenues and expenditures for the past three fiscal years and those projected for the current fiscal year (2010-2011). The Recreation Fund receives revenues from four major funding sources for the Recreation Fund: Recreation Millage, charges for services, interest revenue, and other. The first recreation millage passed at 0.5 mill in 1986 to be assessed over a five-year period and has been renewed every five years since its inception.

Expenditures include items such as salaries and benefits, operation, maintenance, events, programs, promotion, conferences and training, and equipment purchases. Over the past three fiscal years, total expenditures in the Recreation Fund increased by 27%, while total revenues increased only 9%. As a result, the Recreation Fund has operated at a deficit for two of the past three years.

Table 2-1 Recreation Fund Budget				
	06-07 Actual	07-08 Actual	08-09 Actual	09-10 Actual
Revenues				
Recreation Millage	\$315,778	\$329,269	\$335,110	\$337,123
Charges for Services	\$132,636	\$120,926	\$107,606	\$195,708
Interest Revenue	\$1,644	\$2,441	\$287	\$400
Other Revenue	\$0	\$0	\$50,000	\$0
Total Revenues	\$450,058	\$452,636	\$495,003	\$533,231
Expenditures				
Total Expenditures	\$401,014	\$408,855	\$509,950	\$533,231
Balance	\$49,044	\$43,781	\$(16,947)	\$0
Source: Grosse Ile Township				



Water's Edge Fund

Table 2-2 *Water's Edge Fund Budget* outlines actual revenues and expenditures for the past three fiscal years and those projected for the current fiscal year (2010-11). Prior to 2009, the Water's Edge Fund received revenues from membership fees for the golf course and pro shop. On December 14, 2009, with Community Recreation Commission support, the Township Board took final action in placing a public designation on the entire Water's Edge facility. In summary, by deciding to write off the Water's Edge debt (since 2000) to the general fund and combining and transferring the balance sheet amounts to the Recreation Fund, the Township Board immediately eliminated the long standing deficit. This action simplified the reporting and budgeting as a combined entity consistent with all other government funds. This action also eliminated the annual depreciation cost of approximately \$70,000 under the enterprise system, thus eliminating the negative impact on the net income reported on the individual balance sheet. The combining of financial activities comes after a five year effort to open the Water's Edge facility to the general public and eliminate the membership (private) restrictions on the facility. Shortly after approving the plan to eliminate the deficit, the State of Michigan, Department of Treasury accepted and approved the Deficit Reduction Plan submitted by the Township Board in 2010.

Table 2-2				
Water's Edge Fund Budget				
	06-07 Actual	07-08 Actual	08-09 Actual	09-10 Actual
Balance Forward	\$(26,605)	\$(61,264)	\$(120,694)	\$(232,084)
Revenues				
Golf	\$132,291	\$118,070	\$111,470	\$176,340
Membership	\$97,699	\$89,635	\$34,335	\$93,050
Pro Shop	\$1,948	\$1,207	\$2,513	\$2,300
Marina	\$109,699	\$105,312	\$104,038	\$115,588
Pool	\$30,825	\$37,638	\$38,335	\$42,500
Restaurant	\$39,097	\$46,136	\$40,500	\$40,500
Interest fees	\$4,070	\$2,591	\$515	\$1,000
Transfer in-Restaurant	\$58,290	\$57,443	\$56,608	\$55,778
Total Revenues	\$473,889	\$458,032	\$388,314	\$527,056
Expenditures				
Pro Shop	\$142,779	\$96,045	\$87,790	\$127,913
Golf	\$1,238,093	\$163,464	\$160,842	\$170,169
Marina	\$46,346	\$78,416	\$65,580	\$83,605
Pool	\$70,998	\$60,324	\$70,418	\$74,483
General	\$45,128	\$45,982	\$41,803	
Restaurant Loan	\$58,290	\$57,443	\$56,608	\$55,778
Interest	\$16,914	\$15,788	\$14,663	\$15,108
Total Expenditures	\$508,548	\$517,462	\$499,704	\$527,056
Balance	\$(61,264)	\$(120,694)	\$(232,084)	\$(232,084)

Source: Grosse Ile Township



Centennial Farm Fund

Table 2-3 Centennial Farm Fund Budget outlines actual revenues and expenditures for the past three fiscal years and those projected for the current fiscal year (2009-10). Revenues for the Farm generally come from charges for services and facility use, donations, and a cell tower lease. A special millage of 0.65 mils was passed in 1996 to be assessed over a four-year period for the acquisition of and capital improvements to Centennial Farm.

Expenditures generally include maintenance, utilities, equipment purchases, and administration fees. In past years a reduction in expenses can be attributed to a reduction of capital improvement projects that were necessary when the Township first took ownership of the farm.

Table 2-3				
Centennial Farm Fund Budget				
	06-07 Actual	07-08 Actual	08-09 Actual	09-10 Actual
Revenues				
Interest Revenue	\$3,790	\$4,547	\$2,334	\$500
Other Revenue	\$77,730	\$71,784	\$71,386	\$203,992
Total Revenues	\$81,520	\$76,331	\$73,720	\$204,422
Expenditures				
Total Expenditures	\$54,120	\$57,810	\$87,141	\$159,540
Balance	\$27,400	\$18,521	\$13,421	\$44,882

Source: Grosse Ile Township

Festival Commission Fund

Table 2-4 Festival Commission Fund Budget outlines actual revenues and expenditures for the past three fiscal years and those projected for the current fiscal year (2009-10). The Festival Commission Fund generates revenues from sponsorships, organizations, events, food concession and fundraisers, as well as service charges. Expenditures include supplies, entertainment, shuttle service, and promotions for the event. Revenues have remained steady over the past few years. A balanced budget is proposed at \$42,145 for the 2010-2011 fiscal year.

Table 2-4				
Festival Commission Fund Budget				
	06-07 Actual	07-08 Actual	08-09 Actual	09-10 Actual
Revenues				
Contributions	\$17,613	\$15,980	\$10,505	\$19,600
Concessions	\$2,575	\$2,175	\$4,930	\$3,700
Charges for Services	\$16,199	\$10,458	\$15,062	\$17,595
Total Revenues	\$36,387	\$28,595	\$30,497	\$40,895
Expenditures				
Total Expenditures	\$38,614	\$34,353	\$43,218	\$40,895
Balance	\$(2,227)	\$(5,758)	\$(12,721)	\$0

Source: Grosse Ile Township



Other Recreation Related Millages

The Township has experienced a great deal of success in passing recreation and open space-related millages for the improvement of Township facilities and programs. The millage history is outlined in the *Table 2-5 Other Recreation Related Millages* for three additional recreation related funding sources.

- **Open Space Millage.** A 1.0 millage for the purchase of open space in the Township was first approved in 1990 and was renewed in November 2005.
- **Open Space Maintenance Millage.** A 0.25 millage for the maintenance of open space areas was established in 1997 and expired in 2002.
- **Bike Path Maintenance Millage.** From 1993-1995, the Township residents approved a 1.0 millage for the construction of a bike path system on the island. In 1996, residents approved a 0.1 millage for funding to maintain the constructed bike path system. This millage was renewed in November 2005.

Millage	2002	2003	2004	2005	2006	2007	2008	2009
Open Space	.9745	.9878	.9805	.9991	.9991	.9991	.9991	1.0008
Open Space Maintenance	.2435	0	0	0	0	0	0	0
Bike Path Maintenance	.0973	.0961	.0953	.0948	.0999	.0999	.0999	.0999

Source: Grosse Ile Township

Grant Inventory

Grosse Ile has received state grants for various projects in addition several CDBG grants in the past which supplement local capital project expenditures. *Table 2-6 Recreation Grant History* summarizes the state recreation grants awarded to the Township, and *Table 2-7 Other Grant History*, specifies those projects funded through Community Development Block Grant funds and other sources.

Grant Number	Grant Amount	Year Received	Project	Current Inventory
1989 Tourism	\$120,000	1989	Meridian Road Bike Path	Manchester to Lowrie: Phase One of 7 mile system
BF-105	\$90,000	1993	High School Athletic Fields	Developed 2 softball fields
TF96-210	\$100,000	1996	Frenchman's Creek Greenway and Preserve Land Acquisition	7.16 acres of natural land for the purposes of a nature preserve, greenway, drainage way, preservation and passive recreation
BF98-104	\$28,050	1998	Airport Recreation Area Athletic Fields	3 soccer fields and a gravel parking lot



**Table 2-7
Other Grant History**

Project	Grant Amount	Year Received	Park
Community Development Block Grants			
Purchase Senior Van	\$13,300	1995	Community-wide use
ADA Play Equipment	\$57,271	1996	Meridian/Park Lane Schools
ADA Pathways	\$15,903	1997	Athletic Field Connector
Blight Removal/Restoration	\$11,316	1997	Airport Recreation Area
Play Equipment/Ground Cover	\$19,000	1998	Centennial Farm
ADA Pathway	\$35,027	2000	East River to Middle School
Removal/Restoration of Play Area	\$15,794	2002	East River School
Play Equipment	\$21,000	2002	East River School
ADA Pathway	\$1,990	2003	Township Hall/Festival Area
ADA Playground Surfacing	\$12,215	2003	Meridian/Parke Lane
Senior Van (with Wheelchair Lift)	\$46,991	2004	Community-wide use
ADA Pathways/Hard Play Surfaces	\$90,000	2005	Meridian/Parke Lane
ADA Pathway	\$54,983	2008	Water's Edge
Other Grants			
Water's Edge Basketball Court (Wayne County Grant)	\$50,000	2008	Water's Edge
Safe Routes to School (SAFETEA-LU)	\$494,000	2008	Various sidewalks
Source: Wayne County and Grosse Ile Township			







3: Recreation and Resource Inventory

Developing a complete inventory of recreation facilities, programs, and events is an essential component of a five year Parks and Recreation Master Plan as it provides a base of information to use in developing the Action Program. Understanding what facilities, programs, and events are available to Grosse Ile residents will assist decision-making in the future. The inventory covers the following listed components:

- Public Parks and Facilities
- Semi-Public Parks and Facilities
- Public School Parks and Facilities
- Private Parks and Facilities
- Regional Parks and Facilities
- Township Recreation Programs
- Volunteer Organizations and Service Clubs



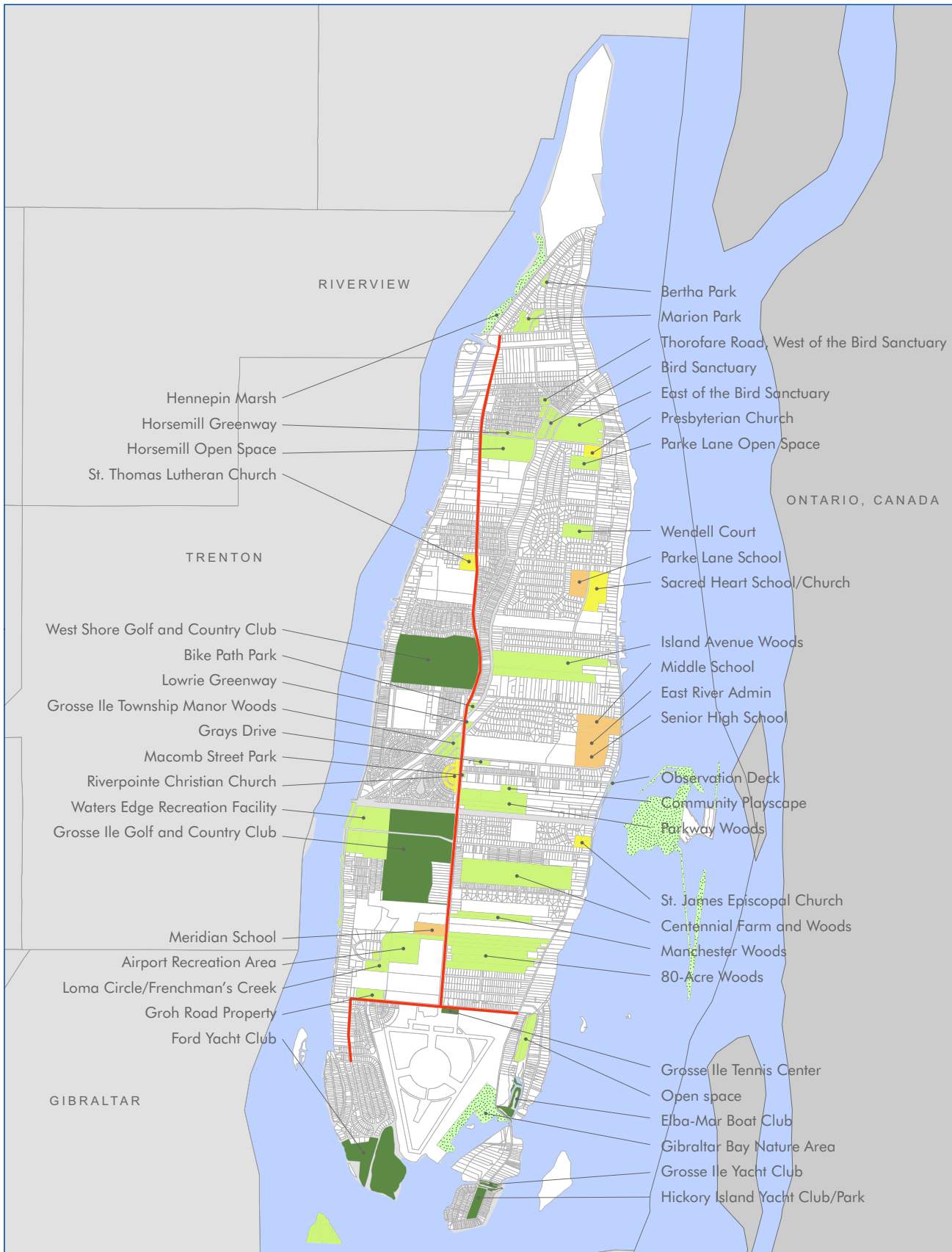
Public Parks and Facilities

Grosse Ile Township contains a variety of well-maintained public parks and recreation facilities. As part of this plan update, park facilities throughout the township, and some not owned by the township were reviewed and inventoried. More than 1,074 acres of land were inventoried, which includes both active parkland and protected open space. This inventory is shown below in *Table 3-1 Parks and Facilities Inventory* and is depicted on *Map One Public Parks and Open Space*.

Park	Acres	Barrier Free Accessibility	Baseball Fields	Softball Fields	Soccer Fields	Football Fields/Track	Basketball Court	Multi-Purpose/Practice	Tennis Courts	Gymnasiums	Playgrounds	Picnic Facilities	Sledding Hills	Golf Courses	Swimming Pools	Marinas	Paths/Trails	Dog Parks
Public Parks and Facilities																		
Airport Recreation Area	29.6	1			5								1					
Bertha Park	1.1	0																
Bird Sanctuary	12.7	0															Y	
Centennial Farm	32.0	2									1	Y					Y	1
Community Playscape	.28	1									1						Y	
Macomb Street Observation Deck	.5	2																
Marion Park	10.9	0																
Water's Edge Recreation Area	75	2					1					1		1	2	1		
Undeveloped Open Space	438.1	0																
Public Subtotal	600.2	-	0	0	5	0	1	0	0	0	2	2	1	1	2	1	3	1
Semi-Public Parks and Facilities																		
Gibraltar Bay Nature Area	40	-															Y	
Hennepin Marsh	120	-																
Stony Island	240	-																
Semi-Public Subtotal	400	-	0	0	0	0	0	0	0	0	0	0	0	0	0	0	1	0
Public School Parks and Facilities																		
Meridian Elementary	10	-		1	1		1			1	1						Y	
Parke Lane Elementary	12	-	2				1			1	2							
Senior High, Middle School & East River Admin. Building	52	-	3	3	3	1		1	8	1	1				1			
Public School Subtotal	74	-	5	4	4	1	2	1	8	3	4	0	0	0	1	0	1	0
Total	1074.2	-	5	4	9	1	3	1	8	3	6	1	1	1	3	1	5	1

Source: Grosse Ile Township; LSL Planning





Map One

Public Parks & Open Space

Grosse Ile, MI Parks and Recreation

- Trail System
- Public
- Private
- Public School
- Private School/Church
- Nature Conservancy

Airport Recreation Area

The Township acquired 29.61 acres of parkland located within the Airport Industrial Park from the Michigan Department of Transportation, Bureau of Aeronautics. The Grosse Ile Recreation Department developed two full-sized and 3 peewee-sized soccer fields and a sledding hill at the Airport Recreation Area with a portion of the funding coming from a grant from the Michigan Department of Natural Resources.



Bertha and Marion Parks

Bertha and Marion Parks are located in the northern portion of the Township and remain undeveloped with no constructed recreation amenities.

Bird Sanctuary

The Bird Sanctuary is a 12.7-acre parcel of land bordered by the Thorofare Canal on the east, Horsemill Road on the south, and Thorofare Road on the west. The area is undeveloped and is being preserved in its natural wooded state as a bird and wildlife habitat with access provided by a wood-chip walking trail.

Centennial Farm

Centennial Farm is a 32-acre parcel of land housing a wide-variety of uses. The property was purchased in 1996 through passage of a three year millage.

- **Recreation Building.** A 4,800 square foot converted pole barn houses two meeting/activity rooms for community use or rental, a kitchen, storage area, restrooms, additional office space that opens directly to the outside, and a 24-hour accessible restroom. A large paved parking lot is available, which provides ample parking for a variety of special events.



- **Equestrian Center.** The farm consists of the Township Equestrian Center managed by Luton Riding Academy. The riding facilities include indoor stalls for horse boarding, indoor and outdoor arenas, outdoor exercise areas, and a bridle trail. Residents can use the facility to board their horses or use the horses owned by the Academy as part of their training and lessons. While horses are the predominant animal on-site, there is also a building that can house other types of animals.
- **Outdoor Activity Areas.** In addition to the outdoor horse riding areas the property also contains a barrier-free playground, picnic pavilion, a dog park, children’s garden, a nature pond, and trails. These areas are open for all types of activities such as special events, educational programs, picnics, and boy scout camping.
- **Community Animal Shelter.** The community animal shelter is located near the recreation building for boarding, adopting and managing animals sent to the shelter.



Community Playscape

In April 1990, a group of residents formed the Grosse Ile Community Playground Committee. The purpose of this non-profit group was to secure necessary funding, materials, land and volunteers needed to construct the first public, community playground. The Township Board granted the group approval to construct a multilevel play structure and picnic area on 0.28-acres of Township owned property on the south side of Macomb Street. In October 1991, the committee had raised \$50,000 and organized hundreds of volunteers to construct the playscape. Before dissolving, the committee transferred control of the playscape to the Township and established a “Friends of the Playscape” group to remain active in the maintenance and use of the facility. The area now contains a parking lot with a connecting, barrier-free, asphalt pathway.



Macomb Pocket Park

This small site was acquired by the township for the purpose of a future pocket park. It is undeveloped, but the township has plans to develop it as a mini-park for neighborhood residents. Development of a final plan for this park is one of the Township's goals in this plan.

Macomb Street Observation Deck

An observation deck was constructed along the east shoreline at the foot of Macomb Street in September 1991. The deck consists of three basic parts: an octagonal shaped floor measuring approximately 15.5 feet in diameter; a 20-foot long, 5-foot wide extension plank; and an entrance ramp providing access from East River Road. The public is able to use the deck as a lookout point from which to enjoy a view of the Detroit River as well as Stony Island.

Water's Edge Recreation Facility

Located on approximately 75 acres at the intersection of Bellevue and West River Roads, this unique facility provides golfing, swimming, and boating. It includes a regulation nine-hole golf course, a driving range and a putting green. The course is maintained for golfing enjoyment seven days a week. Water's Edge employs a golf professional who offers golf lessons at all levels of play, and coordinates a Junior Golf program.



Water's Edge offers the use of two swimming pools. The larger pool measures 30 X 75 feet, has five lanes, and a three to five foot depth range. The smaller, or training, pool measures 20 X 40 feet, and has a maximum depth of three feet. Adjacent to the pool area is a sand volleyball court and an outdoor basketball court. A new picnic pavilion is available for use during community special events, private rentals and fundraisers.



The marina at Water's Edge provides summer dockage for 56 boats and winter storage for approximately 80 boats. Launches, haul outs, and emergency services are provided by a marina lift operator. The marina currently occupies 800 feet of waterfront property, with roughly 920 feet of waterfront property available for future marina expansion. In 2009, a 300 foot long seawall and boardwalk was installed to enhance this amenity of the recreation area.

Bike Paths

A millage was passed in 1993 for the construction of a paved, non-motorized trail network within the Township. A bike path maintenance millage was passed in 1997. To date, nearly seven miles of the trail system have been constructed with some assistance from the Michigan Department of Natural Resources and the Michigan Department of Transportation. The trail system was planned and has been constructed in multiple segments over the past decade. Future plans for the bike path are detailed in the Action Program.

The Township currently has an established bike path system with plans for further expansion in the coming years. The CRC supports the development of this system and is committed to ensuring that bike path routes connect residents with park and recreation facilities. Recently, the community benefitted from Safe Routes to School (SRTS) grant funding, using township-funded improvements at Airport Park as the required "match," to fund construction of the following bike path linkages:

- Meridian Road at Meridian Elementary School
- Hornet Avenue bike path to Meridian Elementary School
- Manchester Road between Meridian Road and East River Road
- Grays Drive between Parke Lane and Lyons
- Burning Bush Drive between Canterbury and Parke Lane
- Berkshire Drive between Canterbury and Parke Lane
- Parke Lane between Berkshire and O'Connell Avenue

Undeveloped Open Space

The Township owns approximately 600 acres of dedicated open space. Over several years and through multiple millages, the Open Space Committee and Township have purchased this land for the purpose of preservation, with the intention that they remain as natural woodlands and wetlands, habitats for both fauna and flora, and free from the impacts of intruding development.



These sites are limited in use to extremely passive recreation. Detailed information on each open space area and trails, including location and tree and wildlife species, can be found in the Grosse Ile Township Open Space and Nature Trail Guides, which are available at Township Hall, and the township's webpage (www.grosseile.com). The following is a list of the individual open spaces and their respective sizes.

- Bike Path Park (1.9 acres)
- Centennial Farm Open Space (84 acres)
- East of the Bird Sanctuary (40 acres)
- Eighty-Acre Woods (80 acres)
- Grays Drive Open Space (2 acres)
- Grosse Ile Township Manor Woods (9.33 acres)
- Groh Road Property (7 acres)
- Horsemill Greenway (5 acres)
- Horsemill Open Space (34 acres)
- Island Avenue Woods (73 acres)
- Loma Circle/Frenchman's Creek (14.8 acres)
- Lowrie Greenway (0.6 acres)
- Manchester Woods (15.47 acres)
- Parklane Open space (10 acres)
- Parkway Woods (32 acres)
- Recreation Area Trail (14 acres)
- Thorofare Road (3 acres)
- Wendell Court (12 acres)

Barrier Free Accessibility

The passage of the American Disabilities Act of 1990 (ADA) required all areas of public service to have barrier-free accessibility, including parks and recreation parks and facilities. Since then, the Community Recreation Commission has taken action to provide barrier-free access at public school and Township facilities. Example projects include providing access to parking areas, playgrounds, athletic facilities and community gathering areas. The Township continues to utilize Community Development Block Grant funding to improve access throughout the community. An evaluation of Grosse Ile Township's parks and facilities has been conducted as part of the inventory. In accordance with the Michigan Department of Natural Resources (MDNR) standards, facilities were evaluated to determine if a person with any of the following criteria can safely and independently access and use the park or facility:

- has limited sight or is blind
- uses a wheelchair
- has a hearing impairment or is deaf
- uses a walking aid
- has a mental impairment

An evaluation system was used to rank each park's accessibility. The system is described below and the accessibility rankings can be found in *Table 3-1 Public Parks and Facilities Inventory*.



- **Accessibility Level 0.** The park is completely undeveloped and left in a natural state with no paved surfaces.
- **Accessibility Level 1.** The park is not accessible to people with a broad range of physical disabilities. This site includes little paved areas and the facilities such as play equipment or picnic areas are not easily accessible.
- **Accessibility Level 2.** The park is somewhat accessible to people with a broad range of physical disabilities. Either the parking or pathways are paved, but not both. Many of the facilities such as play equipment or picnic areas are not easily accessible.
- **Accessibility Level 3.** The park is mostly accessible to people with a broad range of physical disabilities. Most of the parking and pathways are paved, some of the facilities such as play equipment or picnic areas are accessible but may not be completely barrier-free.
- **Accessibility Level 4.** The park is completely accessible to people with a broad range of physical disabilities. Parking areas and pathways are paved, and most of the facilities such as play equipment or picnic areas are easily accessible.
- **Accessibility Level 5.** The entire park was designed using the principles of universal design, enabling all environments to be usable by everyone, regardless of age, ability, or situation.

Semi-Public Parks and Facilities

The properties currently under the stewardship of the Grosse Ile Nature and Land Conservancy have been characterized as semi-public properties for the purposes of this Plan. The Nature and Land Conservancy and Township work closely with one another to protect environmentally sensitive areas of the Township while providing access to these sites for passive recreational enjoyment and educational benefit. The Conservancy has stewardship of three primary properties in the Township.

Gibraltar Bay Nature Area

The Gibraltar Bay Nature Center consists of forty acres located at the southern end of Grosse Ile. The property is adjacent to the municipal airport and was formerly occupied by the United States Navy. Previously owned by the United States Environmental Protection Agency (EPA), this land is now managed under the Fish and Wildlife Services division of the Federal Department of Interior. In 1995, the EPA granted stewardship of the area to the Grosse Ile Nature Conservancy. The area consists of pedestrian pathways, interpretive foliage trails and scenic bay outlook areas. This



unique property affords visitors the opportunity to view and study our coastal environment and wildlife in their natural habitat. Currently the nature area is only open to the public when Conservancy volunteers are able to staff the site, as was written into the agreement between the EPA and Airport. Future plans for the site include additional public hours, improved barrier free access, observation platforms and possibly an outdoor pavilion.

Stony Island

The 240.85 acre Stony Island is currently under the stewardship of the Nature Conservancy and was purchased by the State of Michigan with the assistance of Michigan Natural Resource Trust Funds in 1999. The island is an ecologically significant property in the middle of the Detroit River and is home to many species of fish, birds, wildlife and plants.

Hennepin Marsh

The Hennepin Marsh is a 120 acre marsh stretching north from the Toll Bridge on the west side of Grosse Ile.

Public School Parks and Facilities

The children of Grosse Ile Township are served by the Grosse Ile school district. A total of five public schools contain various types of facilities that are used by school teams, Township programs, and athletic organizations.

Traditionally, a spirit of cooperation has existed between the school district and the Township and facilities are shared whenever possible. Township recreation programs receive secondary use of school facilities. School open space, gymnasiums, meeting rooms, athletic fields, and playgrounds all contribute toward meeting local recreation needs. A current inventory of school facilities located within the Township is included in *Map One Public Parks and Open Space*.

Senior High School, Middle School and East River Administration Building

The Grosse Ile High School and Middle School complex is located along Grays Drive, west of East River Road. The schools are located on approximately fifty-two



acres of land. Outdoor recreation facilities include soccer fields, baseball fields, softball fields, a football field and track, eight (unlit) tennis courts, multi-purpose/practice fields and open space.

Parke Lane Elementary

The Parke Lane Elementary School is located on approximately twelve acres along Parke Lane, across from Sacred Heart on the east side of the island. Primary facilities include two baseball fields, outdoor basketball court, two play areas and open space.

Meridian Elementary

The Meridian Elementary School is located on approximately ten acres of land along Meridian Road, just north of the Airport Recreation Area. Facilities include a soccer field, softball field, outdoor basketball court, play area and open space, all surrounded by a paved walking path.

Private Parks and Facilities

Grosse Ile contains eight primary private recreation facilities that provide recreational opportunities that complement those provided by the Township. Although these facilities are privately operated and often charge a user fee or require membership, they are considered in the plan analysis because they meet specific recreation needs. Private facilities that serve area residents include:

Elba-Mar Boat Club

The Elba-Mar Boat Club is a private club founded in 1955. It is located on the southeastern portion of the island and provides 250 wells for power boats as well as a clubhouse with dining and drinking facilities.

Ford Yacht Club

The Ford Yacht Club is a family-oriented organization located at the southwestern tip of Grosse Ile. The complex includes a complete marina facility and a clubhouse. The building facilities include a clubhouse, library, dining room, lounge, and game room. The marina offers 275 boat wells ranging in length from 25 to 45 feet and is equipped with electricity and water. The marina is able to move and launch sail and powerboats up to fifteen tons. Winter storage is available for approximately



500 boats. The grounds, including Round Island, have areas for picnics and a small basketball court. Round Island is an undeveloped, significantly wooded area that provides privacy for the club complex.

Grosse Ile Golf and Country Club

The Grosse Ile Golf and Country Club is a private club located on the west side of Grosse Ile. The Club was incorporated in 1919, and has been a long standing Island tradition. With a strong and dedicated membership, the Club has progressed over the years to become a premier country club facility. The club includes an 18-hole, Donald Ross golf course that provides challenging golf in a beautiful setting in the finest tradition of the game. Other amenities include a clubhouse, banquet facilities, regulation swimming pool, four clay tennis courts, professional golf shop, swimming programs, and exercise rooms.

Grosse Ile Yacht Club

The Grosse Ile Yacht Club is a private facility located on the southeastern tip of Grosse Ile along East River Road. It is located on approximately four acres of land and includes a club house. The club has many boating and non-boating activities.

Hickory Island Park and Yacht Club

The Hickory Island Park and Yacht Club is located in the center of Hickory Island and is available to residents of Hickory Island. It contains open space, a baseball/softball field, two tennis courts, a basketball court, playground, gazebo and three Par-3 golf holes.

Sacred Heart Church

Sacred Heart is located on approximately twenty acres on the east side of the island, along Parke Lane, across from Parke Elementary School. Sacred Heart has a soccer field, baseball field, sand volleyball court and open space.

West Shore Golf and Country Club

The club was originally designed in 1908 and was the first private club on Grosse Ile. West Shore Golf and Country Club is an 18-hole course that has been selected to host several Golf Association



of Michigan and United States Golf Association qualifying events over the past several years. The recently expanded club house provides dining, card room, television viewing, private parties, showers, birthday celebrations, etc.

Other Churches

There are four churches on the island that don't contain schools. These include St. Thomas Lutheran Church, Riverpointe Christian Church, St. James Episcopal Church, and Presbyterian Church. These parishes have the potential to enter into a mutually beneficial partnership with the Township if land or facility space is needed by either party, so an open dialogue should be maintained.

Regional Parks and Facilities

Regional parks offer unique natural features that are particularly suited for outdoor recreation, such as viewing and studying nature, wildlife habitats, fishing, boating, hiking, and trail use. Many also include active play areas such as ball fields or courts. While these parks are not used for formal programming by the Grosse Ile Township, they provide opportunities for relaxed family activities. Regional Parks are depicted on *Map Two Regional Parks*.

There are several recreational opportunities located in relatively close proximity to Grosse Ile. These facilities range from State Parks, parks under the authority of the Huron-Clinton Metropolitan Authority, Wayne County Parks, to regional pathways as part of the Downriver Linked Greenways Initiative and local facilities of nearby communities.

Michigan State Parks

There are twenty-one State Parks in southeast Michigan that provide recreational opportunities to residents of Grosse Ile and the region. Sterling State Park, located north of Monroe, is the closest to Grosse Ile Township. It is the only state park on Lake Erie and it provides swimming, boating, fishing and year-round camping. There are also acres of lagoons and marshes for wildlife viewing. Tri-Centennial State Park and Harbor in Detroit is the first urban park in Michigan, with thirty-one acres



located along the banks of the Detroit River. Tri-Centennial Park offers several covered picnic areas, shoreline fishing and a 52-slip harbor.

Huron-Clinton Metro Parks

The Huron-Clinton Metropolitan Authority (HCMA) is a regional park district that encompasses the counties of Wayne, Oakland, Macomb, Washtenaw and Livingston. Since its inception in 1940, the HCMA has obtained over 20,000 acres of park land, all located in the metro Detroit region. The parks provide a variety of outdoor recreation and educational activities including picnicking, hiking, golf, biking, winter sports, golf, water-related activities, and special programs. There are four Metroparks that are easily accessible to Grosse Ile Township residents, including:

- Lake Erie (Brownstown)
- Lower Huron (Belleville)
- Oakwoods (Belleville)
- Willow (Belleville)



Wayne County Parks

The mission of the Wayne County Parks and Recreation Department is “to provide stewardship for the unique natural and historic resources that make up Wayne County Parks and to improve the quality of life for our citizens by providing recreational opportunities to enhance access and enjoyment of these resources.” There are two Wayne County Parks, Elizabeth Park and Elizabeth Park Marina, in the City of Trenton that are in close proximity to Grosse Ile and are accessible to its residents. These parks offer a riverwalk, fishing, picnic/event shelters, boat wells, and parking.

Neighboring Community Parks

In cooperation with the City of Wyandotte and the Wyandotte Boat Club (WBC), the residents of Grosse Ile Township are offered a unique recreational opportunity. The WBC is the largest rowing facility in the United States holding over 100 shells in its storage bays. The 36,000 square foot complex was designed to meet all the rowing needs of the local community as well as featuring a



bar, dance floor and meeting room for club members. The WBC was established in 1875 and is a non-profit organization that has been dedicated to promoting amateur rowing for the past 125 years. The WBC is home to five local high school crews one of which is Grosse Ile High School. In addition, nearly 300 clubs, junior high crews and recreational rowers utilize the facility. The Club also offers programs for anyone interested in learning the sport of rowing or becoming part of a rowing crew.

As part of the Grosse Ile-Trenton Utilities Authority agreement in 1980 with the City of Trenton, the two communities also agreed to extend resident rates and privileges to each other's residents at the Water's Edge Recreation Facility and Trenton's Boat Launch at Rotary Park. The City's Kennedy Ice Arena also offers skating classes, adult figure skating, open skating and hockey programs for all age groups.

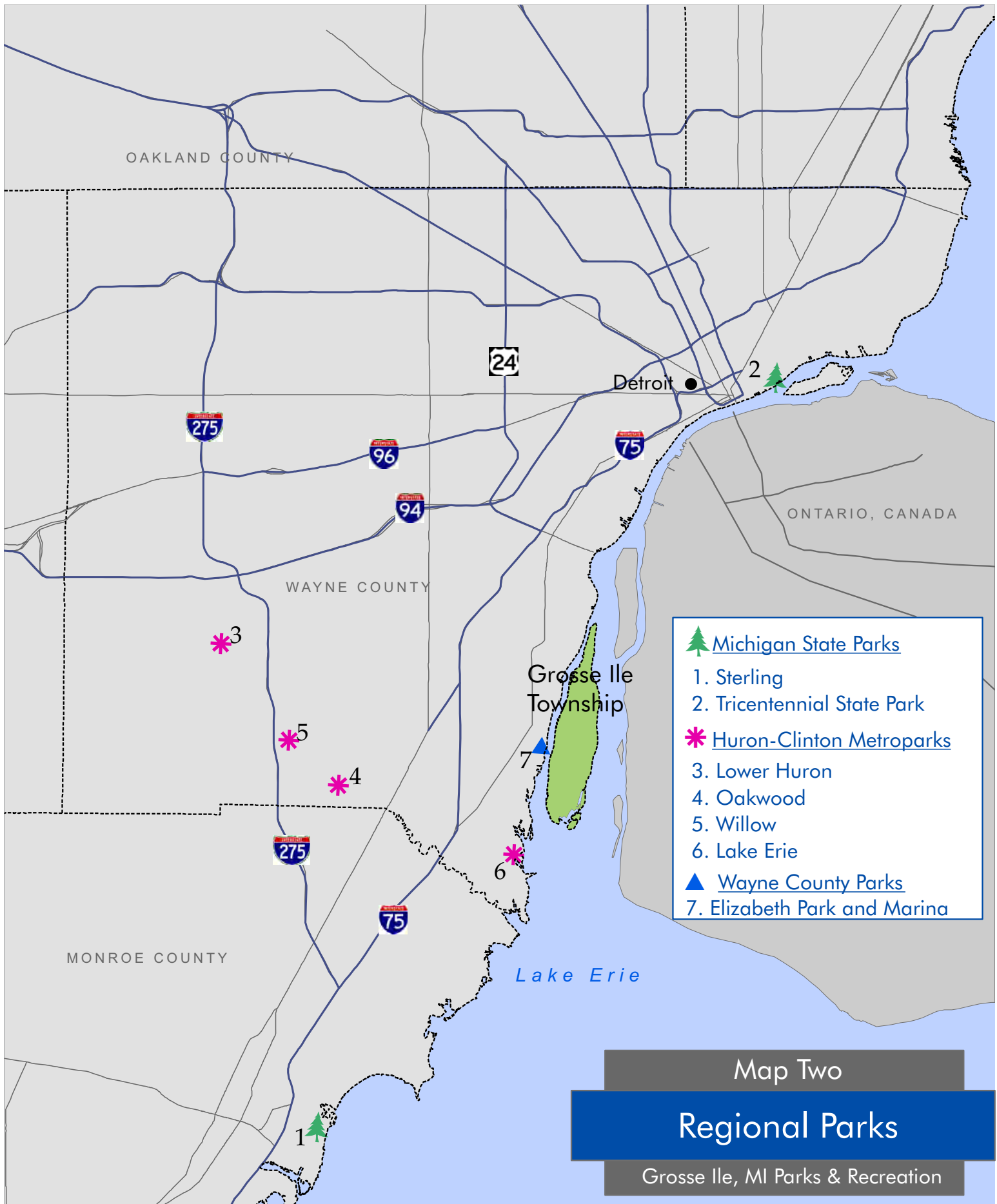
Downriver Linked Greenways Initiative

The Downriver Linked Greenways Initiative is a regional non-motorized pathway vision for the downriver region. It is envisioned that this regional pathway system will connect the seventeen downriver communities and Wayne County through a network of trails and greenways, and will link into a regional and statewide system of greenways. The effort to produce a coordinated, functioning, non-motorized system is an essential factor in the quality of life for the downriver communities. The Downriver Linked Greenways system consists of four primary segments:

- Hines Drive/Rouge Gateway
- I-275 corridor
- Metroparks/Flat Rock/Grosse Ile
- I-75/Detroit River

In addition to these four primary segments, the Downriver Linked Greenways will continue north through the city of Detroit along the Detroit River, south to Monroe and Toledo, and west leading to Ann Arbor, thereby connecting the local parks to the emerging regional and statewide network.





-  Michigan State Parks
- 1. Sterling
- 2. Tricentennial State Park
-  Huron-Clinton Metroparks
- 3. Lower Huron
- 4. Oakwood
- 5. Willow
- 6. Lake Erie
-  Wayne County Parks
- 7. Elizabeth Park and Marina

Map Two

Regional Parks

Grosse Ile, MI Parks & Recreation



September 2009

Data Sources: MCGI; LSL Planning, Inc.;
Huron-Clinton Metroparks; Wayne County



Township Recreation Programs

Numerous recreation programs and activities are offered through the Grosse Ile Township Recreation Department. An understanding of these activities and events currently offered by the Township will help in identifying unmet programming needs. The program year is divided into three sessions: Winter/Spring, Summer, and Fall. Within these sessions the programs are further broken down into Youth, Adult, Senior, Special Events, Travel, Fitness and Sports, Aquatic, Golf, Marina and Equestrian activities. The Recreation Department produces the Channels Program Guide that outlines the available activities through the Department as well as programs offered by other sports and leisure providers. Programs and services are continually updated on the Township website and the Grosse Ile Television (GITV) channels. Recently, the department started utilizing Face book, Twitter and email to promote and update program information.

Adult Programs

The programs offered to the adult residents of Grosse Ile Township through the Recreation Department are designed to provide continuing education, teach new skills and are just for fun. Computers, the arts, culinary arts, gardening, dance and other miscellaneous classes are outlined in the Channels Program Guide. Many programs and classes are offered on a seasonal basis for example, during the Fall session many culinary art classes like Thanksgiving Dinner, Party Foods and Appetizers are offered. The Winter/Spring session offers educational opportunities in boating, gardening and travel classes to prepare for the summer months. The following is a summarized list of programs offered to adults in the Township:

- Albums
- Art/Painting
- Stained Glass
- Boating Safety
- Bridge
- Computers
- Culinary Arts
- Dance (Social & Line)
- Dog Obedience
- Gardening
- Jewelry Making
- Knitting
- Crochet
- Scrapbooks
- Singles Activities
- Entertaining
- Technology
- Travelogue
- Self Defense



Youth Programs

Youth programs are designed for children ranging from preschool age through teenagers. A wide variety of activities are offered to interest this diverse age group. With the renovations to school facilities, Centennial Farm, Water’s Edge and the Airport Recreation Area, the Recreation Department is better able to coordinate Youth Programs and is looking to expand program activities in the future. Each season, the Recreation Department designs special activities through the Youth Program. During the summer months, everything from camps, sports, dance, theater, nature and science classes are offered ranging from one-day events up to six-week courses. Periodically during designated days off from school, students can sign up for activities and day trips.

The following is a summarized list of many of the available Youth Programs offered each year by the Recreation Department:

General Programs	Summer Camps	Preschool Programs	After School Programs
<ul style="list-style-type: none"> ▪ Babysitting ▪ Cooking ▪ Family Fun Series ▪ Dance ▪ Improvisation ▪ Music ▪ Tae Kwon Do ▪ Art Classes ▪ Robotics ▪ Lifeguarding ▪ Basic Water Rescue ▪ Marine Safety ▪ Children’s Choir 	<ul style="list-style-type: none"> ▪ Art ▪ Dance ▪ Fitness ▪ Language ▪ Nature ▪ Science ▪ Fun in the Sun ▪ Sports (variety of camps) ▪ Cheerleading ▪ Theatre ▪ Video ▪ Young Writer’s Workshop ▪ Magic Workshops 	<ul style="list-style-type: none"> ▪ Dance ▪ Dinosaurs ▪ Garden/Nature ▪ Math ▪ Music ▪ Art Activities ▪ Play Activities ▪ Sports (variety of programs) ▪ Parent & Tot Swim ▪ Science ▪ Gardening 	<ul style="list-style-type: none"> ▪ Art ▪ Computers ▪ Cooking ▪ Crafts ▪ Hobbies/Crafts ▪ Language ▪ Rocketry ▪ Science ▪ Sports ▪ Theater ▪ Video Production

Senior Programs

The Recreation Department provides continual programs specifically designed to serve the senior citizens of Grosse Ile Township. The Grosse Ile Senior Citizens Club meets on the second and fourth Tuesday of the month at the recreation building at Centennial Farm. Regular card parties and drop-in programs are offered at the Center. The “Morning Walk” activity offered under the Sports and Fitness program is also a favored interest with the senior residents of the Township. Other individual programs and activities for seniors are scheduled throughout the year. A Pinochle Tournament is generally offered nine times each year, holiday events like Christmas, Valentine’s



and St. Patrick's Day celebrations are regularly scheduled, and fitness programs are periodically offered. Specific trips offered just to seniors are also planned.

Sports and Fitness

The Recreation Department offers sports and fitness classes throughout the year. League play for sports like basketball, softball, and volleyball are available throughout the year to differing age groups. In addition a junior golf program, individual and group golf lessons, league play, golf tournaments, a swim lesson program, sand volleyball and special events are provided at Water's Edge. The following is a summarized list of the program types offered:

- Aerobics
- Basketball
- Body Toning
- Kickboxing
- Pilates
- Zumba
- Cardio Dance
- Ultimate Boot Camp
- Dance
- Golf Leagues (Junior, Adult & Senior)
- Golf Lessons (Pre School, Junior & Adult)
- Senior Fitness
- Softball
- Competitive Swim Program (Youth)
- Swim Lesson Program
- Aqua Zumba
- Kayaking
- Tae Kwon Do
- Table Tennis
- Pickleball
- Lacrosse
- Tai Chi
- Volleyball
- Walk
- Yoga

Travel Programs

Each session the Recreation Department outlines in the Channels Program Guide different "Travel Adventures" that are planned for that season. The adventures range from local trips in the Metro Detroit area to weekend and week-long stays in other states and Canada. The outings vary from family oriented trips like "Disney on Ice" to adult focused excursions similar to the Motor City Casino tour. Below is a list of the types of destinations planned:

- Casinos
- Detroit Highlights
- Hiawatha Horse Park
- Overnight Trips - Mackinac Island, Ohio, Washington D.C, Gettysburg
- Sporting Events
- Theaters - The Gem Theater, Fox Theater, The Purple Rose Theater



Special Events

The Recreation Department sponsors special events throughout the year that often relate to a season or holiday. The events are always outlined in the Channel's Program Guide. The following is a list of many of the events planned all through the year:

- Brunch with Santa
- Daddy-Daughter Dance (music, dancing and refreshments)
- Easter Event (a visit from the Easter Bunny, egg hunt, wagon rides and refreshments)
- Harvest Day (includes a petting farm, hayrides, pony rides, children's crafts, entertainment and refreshments)
- Hurray for Halloween (includes a costume parade and trick or treating on Macomb Street)
- IslandFest (a three day summer event that includes arts and crafts, entertainment, carnival, food vendors, historic and nature tours of the island, parade and many more events)
- Island Glow Township Tree Lighting
- Mother and Son Night (music, dancing and refreshments)
- Daddy-Daughter Hawaiian Party
- Mom-Son Beach Party
- Last of School Pool Party
- Family Pool Party
- Riverfront Concert Series



Equestrian Programs

The Equestrian Center at Centennial Farm is a 32-acre facility designed to offer riding lessons, boarding of horses, riding clinics and special events. The facility includes a 13,600 square foot indoor arena, a 12-stall barn attached to the arena, eight grass paddocks, round pen, outdoor arena and a riding path, and includes the six-stall historic Centennial Barn. Luton Riding Academy, in cooperation with the Grosse Ile Township Recreation Department, manages the Equestrian Center at Centennial Farm. The facility is owned by the Township but is leased to the Luton Riding Academy for equestrian services. They are responsible for acquiring and training horses that are either owned or leased by the academy, stable management, barn maintenance, horse health and horses boarded by Township residents. They also coordinate equestrian programs, classes and clinics.



Luton Riding Academy and the Grosse Ile Recreation Department will be working cooperatively with a newly created volunteer group (Grosse Ile Equestrian Club) to achieve the following mission:

- Provide equestrian-themed community recreation and education opportunities for area residents
- Support GI competitive equestrians
- Increase awareness of and participation in local equestrian programs
- Work in cooperation with the Centennial Farm Equestrian Center operator and Grosse Ile Recreation Department to facilitate stewardship of the equestrian facilities
- Raise awareness and assist with equine charities including horse rescue operations and/or therapeutic riding programs

Support Services

The Recreation Department offers community outreach programs to help Township residents in need, including:

- American Association of Retired Persons (AARP) Senior Tax Service - The AARP volunteers their services to help Township seniors file their taxes each year
- Meals on Wheels - This program is offered through the Wayne County Office of Nutrition and the Recreation Department. The purpose of the program is to provide nutritional meals to homebound seniors and the disabled.
- Van Transportation - The van service is available to senior citizens, low-income residents and disabled individuals that are either unable to drive or do not own a vehicle.

Volunteer Organizations and Service Clubs

In addition to the above listed recreation programs, many other clubs and groups offer social, competitive, and child-oriented recreation activities. Many of these groups are volunteer organizations requiring payment of annual or monthly dues to support activities. These groups serve an integral role in recreation planning because they offer programs for residents that may not be offered by the Township. Examples of volunteer organizations and service clubs that serve the Township include:

- Boy Scouts
- Dance Grosse Ile



- Girl Scouts
- Grosse Ile Alliance for the Arts
- Grosse Ile Educational Foundation
- Grosse Ile Garden Clubs
- Grosse Ile Goodfellows
- Grosse Ile Herb Society
- Grosse Ile Historical Society
- Grosse Ile Hockey Association
- Grosse Ile Lions Club
- Grosse Ile Rotary Club
- Grosse Ile Rowing (CREW)
- Grosse Ile Senior Club
- Grosse Ile Youth Recreation Association (GIYRA)
- Kiwanis Club of Grosse Ile
- T.A.I.L.S. Grosse Ile Animal Shelter
- VFW Post 7310





4: *Basis for Action Program*

An essential task in the recreation planning process is to determine the needs of the Township. The previous sections of the plan provide valuable insight into all aspects of parks and recreation system in Grosse Ile. This section of the plan evaluates the information to best understand the needs and priorities for parkland, recreation facilities, and programs in the community.

There were several resources incorporated into the analysis. To begin, public input was important in order to understand what residents and those actively involved in recreation considered important priorities and preferences. Next, existing parkland was evaluated in terms its size, location, and function. This was followed by an analysis of recreation facilities such as athletic fields, playgrounds, and trails. Current recreation programs were then evaluated to best understand future programming needs and opportunities. Finally, to ensure that all perspectives were considered, a number of existing planning documents were reviewed to ensure that the Park and Recreation Action Plan coincided with the current vision and goals of other related community development efforts.

Public Input

As part of the effort to encourage public participation, multiple opportunities for input were offered. Below is a summary of the comments and suggestions received during the public involvement stage of the plan. Additional information about the focus group meetings and public workshops held are found in *Appendix B: Public Involvement & Adoption Information*. Many common ideas were discussed and the comments listed below encompass the general sentiment of the opinions provided, but do not represent any preferences or prioritization.



Water's Edge Recreation Facility:

- Commercial uses should be allowed to keep parks running, but shouldn't overpower that they are public parks – preserve resident's *public* interest in parks
- Strengthen resident's comfort using all parks for all recreational purposes
- A recreation calendar should be kept separate from the community events calendar
- Collaborate with school (and others) on improving or remodeling the pool so it could be used for competitive youth swimming. Expand hours at pool for after-work use
- Accessible parking is needed. More parking is also needed to respond to increased Sharkey's demand and future small events
- Public access to waterfront is definitely desired, but we need to see if there are better locations – mixing of boat traffic with general public is not ideal – look for other areas
- The park should be promoted for its leisure activities, not just for its boat launch or golf
- Keep marina theme as the primary use of waterfront – improvements are needed, but marina should be the focus rather than trying to make this *the* launch in Grosse Ile.
- More transient boat docks will be needed as a result of recent boating restrictions on cross-border activity, and likely increased demand at Sharkey's
- Current plan shows boat storage area, which could be used in the summer as parking lot
- General golf course maintenance is needed

Centennial Farm:

- Expand dog park – provide area, adjacent to large dog area, for smaller dogs
- Consider reorganizing paddocks, dog park, community garden into a more logical layout
- Maintain agricultural structures (coop, barn, silo) and honor their historic significance
- No fire protection for structures – alarm systems are needed, grant funding could help fund fire suppression if it is tied to access
- Utilize Centennial Farm as an actual farm
- Farming/growing initiatives with local schools
- Urban co-op farms and/or gardens – use Traverse City as example
- Community Victory Garden
- Limited signage into trails (“...leave only footsteps...”) lots of trash is collected in the woods
- Recycling and trash receptacles along pathways and trails
- More trails and access to nearby residential areas are needed
- Trails should respect adjacent property owners – some buffer is needed
- Accessibility, accessibility, accessibility (universal design for ALL residents)
- Advertise walking trails – most don't know where or how many there are



- Expand activities and services to include 4-H, horse boarding and riding lessons, including therapeutic rehabilitation programs

Airport Recreation Area:

- Pavilion is needed as lightning shelter for games. It could also be used for concessions
- Lack of soccer fields and need for maintenance – current facilities will not accommodate tournaments or invitational events

Other General Comments:

- Provide dedicated bike paths v. sidewalks
- Canoe/kayak launch areas are needed – launch site on township owned property between Elba Drive and East River could be used as a launch and storage site
- Seniors want facilities with cozy, comfortable places to gather, socialize and eat together
- Transportation for seniors has improved, but could see more
- Need more, shorter day trips for seniors
- Improve communication with residents on recreation issues. Increase use of website and Channels newsletter

Parkland Analysis

The National Recreation and Park Association provide a recommended park classification system. The recommendations for Grosse Ile Township are summarized in *Table 4-1, Public Parkland Acreage Analysis*. The system categorizes park land as/either: mini-parks, neighborhood parks, or community parks. Each category has its own set of size requirements, service area, and function as follows:

- **Mini Parks.** The primary purpose of mini parks is to provide local playground and open space for residential neighborhoods. They are generally under one acre in size, with a service area of less than ¼ mile radius. For this plan, only the Community Playscape was designated a mini park.
- **Neighborhood Parks.** Neighborhood parks are typically multi-purpose facilities that serve as the recreational and social focus of the neighborhood are generally at least fifteen acres in size. They provide areas for both passive and active recreation activities and have a service area of ¼ to ½ mile in radius. The standard is to have one to two acres of neighborhood parks



per 1,000 people. Bertha Park, the Bird Sanctuary, Macomb Street Observation Deck, and Marion Park are designated as neighborhood parks.

- **Community Parks.** Community parks, which are typically at least twenty-five acres in size, contain a wide variety of recreation facilities to meet the diverse needs of Township residents and may include areas for intense active recreation as well as passive recreation opportunities not commonly found in neighborhood parks. Many of these parks serve the immediate neighborhoods around them, serving as both a neighborhood park in addition to a community-wide park. Their service area is one to two miles in radius and the standard is to have five to eight acres per 1,000 people. The Township’s three most developed parks: Airport Recreation Area, Centennial Farm and Water’s Edge Recreation Area, which are used by the entire community, were designated as community parks, as were the numerous undeveloped open spaces (comprising 438.1 acres) that are available to all residents.

Grosse Ile Township & School Park Classifications	NRPA Guideline for Acres ^{1,2}	Existing Acres for Grosse Ile ³				Recommended Acres for Grosse Ile ⁴
		Twp. Parks	Semi-Public	School	Total	
Mini Parks	.375	.28	0	0	.28	3.94
Neighborhood Parks	1.75	25.2	0	22	33.97	18.40
Community Parks	6.5	574.7	40	52	224.66	68.34
Regional Parks	7.5	0	360	0	360	78.86
Total	-	149.58	400	74	618.91	169.54

¹ Per 1,000 Residents
² Source of Standard: Lancaster, Roger A., Ed. 1983. Recreation, Park and Open Space Standards and Guidelines. Alexandria, VA:NRPA
³ Acreage includes facilities listed in *Table 3-1 Parks and Facilities Inventory*
⁴ Based on July 2009 SEMCOG estimate of 10,514 people

In general, the amount of public open space and parkland on the island is impressive and a true source of pride for the community. In comparison to the total population of the community (10,514 people as of July 2009¹ as estimated by SEMCOG), a total of 169.54 acres of park land is needed to adequately serve residents. The Township provides over 600 acres, far exceeding the requirement. However, in terms of this analysis it is important to note that while the acreage far exceeds national and state standards, much of this land is undeveloped and unusable for active recreation.

Analysis of the service area for community parks reveals that geographically, the Township is well served by parks. A closer look at the use of the different park and open space areas indicates that improved park land such as Centennial Farm and the Community Playscape are located in the



central and southern areas of the Township. As a result, residents in the northern side of the island are further removed from recreation areas. In addition, the bike path does not extend north of Bridge Road, nor is there an east-west connection, further isolating residents. Since there is publicly owned park land in these underserved areas, such as Bertha or Marion Park, opportunities should be explored for recreation facilities at these locations.

Areas purchased for open space preserve valuable resources such as marsh areas, woodlands, wetlands, and wildlife. Therefore, an important emphasis in the coming years should be placed on adding value to these important public open space areas through very simple, non-intrusive methods such as nature trails, interpretive signage, and additional educational programs. In addition, increasing public awareness about these areas will increase enjoyment and appreciation by more residents.

Facilities Analysis

Existing facilities were also analyzed to determine if the current facilities are adequate to meet the needs of residents. The analysis takes into account a variety of factors including existing conditions within the Township, information obtained from the focus group sessions and public workshop, the character of the community, programming needs and site conditions.

Grosse Ile and School Park Facility	NRPA Guideline for Facilities ¹	Existing Facilities for Grosse Ile ²				Recommended Facilities for Grosse Ile ³
		Twp. Park	Quasi-Public	School	Total	
Tennis	1/2,000	0	0	8	8	5.3
Playground	1/3,000	2	0	4	6	3.5
Baseball/ Softball	1/5,000	0	0	9	9	2.1
Basketball	1/5,000	1	0	2	3	2.1
Volleyball	1/5,000	1	0	0	1	2.1
Soccer	1/10,000	5	0	4	9	1.1
Football	1/20,000	0	0	1	1	.5
Running Track	1/20,000	0	0	1	1	.5
Swimming Pool	1/20,000	1	0	1	2	.5
Golf Course - 9 Hole	1/25,000	1	0	0	1	.4
Golf Course - 18 Hole	1/50,000	0	0	0	0	.2
Ice Rink	1/50,000	0	0	0	0	.2

¹ Source of Standard: Lancaster, Roger A., Ed. 1983. Recreation, Park and Open Space Standards and Guidelines. Alexandria, VA:NRPA
² Includes facilities listed in *Table 2-1 Public Parks and Facilities Inventory* and *Table 2-2 School Parks and Facilities Inventory*
³ Based on July 2009 SEMCOG estimate of 10,514 people



Court Sports

Outdoor basketball courts are primarily available at the schools in addition to the new outdoor basketball court constructed at Water's Edge in 2009. There are four gymnasiums at the public school facilities along with the tennis courts provided at the Senior High School. Privately-owned facilities provide additional outdoor courts, such as the tennis courts at the Grosse Ile Golf and Country Club and gymnasium at Sacred Heart. In total, eight tennis courts are open to the public, all of which are located at the Senior High School. The amount of courts available was not identified as a major concern during the public involvement process, however the table above suggests that additional volleyball courts are needed. The Township should consider providing multi-use court facilities within one of the park areas that can accommodate a variety of activities such as volleyball, basketball and tennis. This is an easy, low maintenance and low cost solution for diversifying the types of facilities offered to residents.

Athletic Fields

The majority of athletic fields available in the Township are located at the schools. The Senior High School provides fields for baseball, softball and football, while the Middle School also provides for softball and soccer. Public soccer fields are also available at the Airport Recreation Area. Additional soccer and baseball fields are available at Sacred Heart Catholic Church.

During the focus group sessions, discussion of athletic fields centered around the need to improve the existing facilities rather than construction of new ones. Improvements needed for safety, such as providing shelter from inclement weather, or providing accessible parking areas, should be made a priority. Other improvements like concession stands and pathways could come at a later time, but are still needed to maximize use and enjoyment of the Airport Recreation Area and other parks.

Playgrounds

Public play areas are provided at Centennial Farm, the Community Playscape, as well as the Elementary and Middle Schools, and a private play area is provided at the Ford Yacht Club. Public comments indicate a desire for additional play areas and general maintenance. As noted in the park land analysis, Marion Park could provide an opportune location to meet this need at the north end of the island.



Golf Courses

There are three golf courses on the island, one of which is owned by the Township at Water's Edge. The two private courses are the West Shore Golf and Country Club and the Grosse Ile Golf and Country Club. As noted during the public involvement process, golfing is an important activity for island residents of all ages. While there does not appear to be a need to develop additional courses, there is a strong desire to maintain the existing public course at Water's Edge. Stagnant ponds need to be maintained and certain sloping tees graded. Of continued concern is the need to stay financially successful, and so the Township should consider ways to increase business to the golf course and adjoining Sharkey's Restaurant. Some suggested upgrades to the golf course and marina would help attract boat clubs, and others felt that providing pathway connections to Water's Edge would increase general business. Other ideas included making the course more challenging, organizing additional leagues, improving the driving range with lights and new nets. Hole sponsorships could also be explored.

Swimming Pools

A public pool is available at the Water's Edge Recreation Area. The Grosse Ile Golf and Country Club maintains a privately-owned pool. The need for a larger pool capable of accommodating school swim meets, or to provide therapeutic exercise for seniors, was identified during the focus group sessions. Because of this shared need, the Township should discuss future planning of an indoor, competition grade swimming pool with the School, as it would be an ideal partner in this effort. However, due to development and maintenance costs, a new pool will continue to be a long range planning goal.

Marinas

While a majority of the marina space on the island is provided by private boat and yacht clubs, the Water's Edge Recreation Facility provides the only publicly-owned marina. It is located on West River Road across from the golf course and pro shop.

Additional transient docks were suggested at the Water's Edge workshop, as more demand is anticipated due to increased boating restrictions on cross-border activity.

A need for additional public access to water was identified during focus group sessions, specifically for smaller motorized boats and non-motorized craft such as kayaks and canoes. Due to the increasing difficulty and cost of waterfront property in the Township, the existing marina may be



the most feasible and efficient location to meet this desire. However, some at the focus group meetings suggested an additional access could be provided to the East River at the open space between East River Road and Elba Drive.

Bike Paths

The Township provides nearly seven miles of paved bike paths, primarily running north to south along Meridian Road. Providing a logical, looped system in the community is crucial to providing all residents with non-motorized access to key destinations. A paved bike path system serves residents of all ages and abilities and will continue to be a high priority. Resident comments during the focus group meetings, and during past plan updates, revealed that the following objectives should be met in the coming years:

- **East River Road Pathways:** Pathways on East River Road between Manchester and Horsemill are important to provide north/south connections. Links to the Gibraltar Bay Nature Area and South Pointe Road should be provided to connect with Round Island and nearby neighborhoods.
- **West River Road Pathways:** Secondary to the East River pathways, residents did express a desire for additional north/south connections along West River Road.
- **East/West Pathways:** Once additional north/south pathways are provided, more cross-connections will be needed to help create a loop. Paths along Bellevue Road, Grosse Ile Parkway and Horsemill Road were suggested. Paths along Grosse Ile Parkway should be extended across the Channel to link to the regional bike path network planned by The Downriver Linked Greenways Plan.

Nature Trails

The Bird Sanctuary and the open space at Centennial Farm both offer nature trails for walking and wildlife observation. These are important resources for the community and offer passive recreation for residents of all ages. There is a need for greater public awareness of these facilities as well as the need for an informational kiosk to increase their value. Information about trail locations was improved with the development of the Nature Trail Guide by the Open Space Committee in 2009. Improved access to these facilities from the bike path is needed and is addressed in the above listed objectives.

In the coming years, the Township should build upon the success of these facilities and explore



opportunities for additional nature trails within the open space areas. Currently, residents are welcome on all public open space land however most sites do not have a defined entrance point or trail to follow. An overarching goal for trails should be to develop a consistent signage theme for use at all Township parks. Distinct but similar signs for trails should be developed to notify residents of trail heads and entry points. Public comment during the focus group meetings indicated a need for amenities like trash receptacles, and signage that includes educational data and user guidelines. While trails at all of the open space areas are not ideal, the Township should consider a few of the sites that would offer the greatest benefit. Some examples include:

- A trail at the Horsemill Open Space (on either side of Horsemill Road) would greatly enhance the existing Sanctuary and offer a great trail system for residents on the north side of the island. This can also link with the existing bike path along Meridian Road.
- A short trail at the Parkway Woods Open Space would create a loop from Macomb Street, the Community Playscape, and the bike path along Meridian Road.
- A trail extension from the Centennial Farm Open Space to the bike path on Meridian Road could offer a convenient alternate access to the park.
- A trail extending through the 80-acre Woods Open Space area could create a link between the Airport Recreation Area and East River Road.

Observation/Overlook Decks

The Township provides an observation deck as an overlook to the water at the end of Macomb Street along East River Road. The overlook is a valuable facility, but can always be improved. Comments from past plan updates indicate the following future opportunities:

- The Nature and Land Conservancy has plans for an additional observation area at the Gibraltar Bay Nature Center.
- A waterfront seating area could be possible at the marina at Water's Edge if the layout of the site was improved.
- The land area on the west side of the Water's Edge golf course building (includes offices and a restaurant) could offer a beautiful vista of the Channel with some improvements.
- The wooded area west of the Airport Recreation Area has the potential for an overlook towards the Frenchman's Creek greenway.
- Purchase waterfront property that is currently under private ownership. This is a more costly option than attempting to use the current land and facility inventory, but should be considered as opportunities arise.



Centennial Farm

As described in the inventory, the Farm provides a variety of facilities, but feedback during the focus groups indicate that many residents are unaware of them. Public comment focused on the need to increase awareness and general use of the park, since most residents view it as an exclusively equestrian facility. Of particular interest to the focus group sessions was the dog park, which has been highly used since its construction. Some suggested it could be further improved by adding separate large and small dog areas, and by providing additional seating and water fountain amenities. Other additions like a petting zoo, community garden, expanded dog parks, formal pathways and fishing platform at the pond will help draw additional residents improve the overall experience for users.

Programming Analysis

Each year, the Recreation Department along with the other groups offering activities and programs, analyze participation trends for all of the programs offered. Based on the participation data, programs are expanded as feasible for popular ones and reduced or eliminated for less popular programs. While interests and trends change, each year overall participation in programs increases at a steady rate. In Grosse Ile there are a few main components that contribute to the success of recreation programming that should be considered when planning for the future.

Diversity of Services

The programs offered to Township residents offer a diverse range of activities, events, programs, and educational experiences for all ages, abilities, and interests. This is a valuable quality that must be supported in the future. On-going analysis is a high priority to make sure that programming keeps pace with trends, technology, community demographics, the economy, and the physical conditions and resources in the Township.

Cooperation/Communication

As discussed with focus group participants, greater coordination is needed to ensure that all programs thrive. The focus group session was a successful kick off point for collaboration between facilities and programs. As noted above, new facilities can initiate new programming opportunities for all groups. Through teaming up with other compatible programs, more can be accomplished.



Investments to improve cooperation and communication are considered a high priority because it is crucial to meeting the park and recreation needs of the community. Ideas discussed as part of the focus group meetings included a consolidated calendar of activities and improved use of the internet, Township website, and cable channel to increase access to such information.

Community-Wide Events

The Recreation Department continues to play an active role in planning community-wide special events. These are always popular and should continue to be a priority in the coming years. As park and open space is improved, the Township should ensure that events and activities take advantage of various public recreation areas. This helps to expose residents to areas of the Township and public land of which they may not be aware or would not normally visit.

Accessibility

A crucial link to program participation is accessibility. The existing Township van service is available to seniors, low-income residents, and disabled individuals. As the population ages, demand for this service will continue to increase. Investments and improvements will be needed in the future to keep pace. In addition, there is an expanded need for transportation for children involved in after school programs. Many households have either two working parents, or are single headed households and cannot get home in time for their children after school. A van service that will transport children to after school programs and events would greatly assist parents in the community.

New Facility Opportunities

One main reason for the success of the programs is that as new facilities become available, so do new opportunities for programs. For example, expansion of the bike path system creates new opportunities for longer walking programs and new nature trails can expand educational opportunities and nature observation. As new facilities become available and as existing facilities are improved, it will be important for the Recreation Department to consider programming opportunities that should be pursued to maximize the use of new recreation resources.

During the master plan process, major interest from the community was expressed for an indoor sports facility (field sports), inline/outdoor hockey rink, a football/cheerleading practice area and a non-motorized boat launch.



Other Planning Resources

Airport Recreation Area Plan

In 2000, the Township acquired this 29-acre site, which sits across Groh Road from Grosse Ile Township Hall and the Grosse Ile Municipal Airport. Prior to acquiring the property, the Township heavily engaged the public, and developed a plan for the site that includes soccer fields, restrooms, shelters, nature trails, parking, playground equipment, etc. To date, some soccer and football fields, a sledding hill and pathways have already been installed, but additional fields, paved parking, picnic/lighting shelter, concessions building, playscape and trail extensions have yet to be developed.

Vision Insight Planning (VIP) Action Plan

The Vision Insight Planning Action Plan is a strategic plan for the parks and recreation profession. It was originally developed by the State of California Park and Recreation Society and is being promoted by the Michigan Recreation and Park Association. The VIP Plan creates a statewide vision and mission. It also identifies core competencies that park and recreation professionals already possess, as well as those they need to acquire. The Plan develops strategies and performance measures to reposition the parks and recreation profession.

The purpose of the VIP Plan is to be proactive in determining the future of the parks and recreation profession through developing and implementing a vision and action plan for the profession that creates future success. The VIP Action Plan is intended to:

- Place the parks and recreation profession at the table when critical issues are framed and decisions are made
- Proactively address future trends
- Meet the needs of a rapidly changing society
- Provide a common vision leading to a preferred future

Generally, this program will ensure that park and recreation decisions are made considering all impacts and resources. For example, parks and recreation has an impact on human development, health and wellness, cultural unity, community problem solving, and economic development. This planning tool should be incorporated into the Township's work program to provide guidance for the Recreation Superintendent and staff. There are also many useful objectives that can be incorporated into the goals and guidelines of this Plan.



Grosse Ile Schools

Discussions with representatives of Grosse Ile Township Schools indicate that many of their past planning efforts have been implemented; however, the plan for a nature area/center and a community pool remain. Short term priorities include improved coordination between the schools and Recreation Department for better scheduling and public awareness of activities and events.

Grosse Ile Nature Conservancy

The Grosse Ile Nature Conservancy plans to continue and expand their relationship with the Recreation Department as well as the local schools. In conjunction with the Township, the Conservancy is looking to gain outside funding support for improvements at the Gibraltar Bay Nature Center including trails, parking improvements and scenic outlooks. The Conservancy is also going to work closely with the Township in terms of man power, in the attempt to open the nature area more often to the general public.

A large focus of the Conservancy is on education. They intend to work closely with the schools in the development of “outdoor classrooms” and utilizing the properties currently under their stewardship, including Hennepin Marsh, Stony Island and the Gibraltar Bay Nature Center.







Grosse Ile Township offers a high quality of life for its residents including strong neighborhoods, significant natural features, and a variety of community facilities and services. This Park and Recreation Master Plan will match community assets to future recreational needs.

This final portion of the plan is the culmination of a comprehensive planning effort that began with public involvement and the analysis of existing community conditions. An assessment of need was developed based on the evaluation of existing parks, recreation facilities, and programs. The findings of this analysis are in Section 5 and translated into the recommendations of this section. The Action Program provides the following components:

- **Action Plan Framework.** This includes the overall guiding mission statement for the Plan, as well as general goals, as established by the Community Recreation Commission.
- **Guidelines.** This section provides more detailed guidelines, or objectives to carry out the goals of the Plan.
- **Bike Path and Trail Plan.** These are specific recommendations that meet the overall goals and guidelines of the Plan as they relate to bike paths and trails.
- **Park Specific Recommendations.** These too are specific recommendation for Township parks and facilities that meet the overall goals and guidelines of the Plan.
- **Programming Recommendations.** Another important aspect of the planning process was the desire to maintain and expand programming. The plan provides specific programming recommendations in accordance with the goals and guidelines of the Plan.
- **Five Year Capital Improvement Plan.** The final component of the Plan is a 5-year outline of prioritized projects and their potential funding sources.

This format provides a systematic approach to implementing this Plan and ensures that realistic and feasible strategies are top priority for the Community Recreation Commission.



Action Plan Framework

Mission Statement

To contribute to the social, physical, educational, cultural, and general well being of the Grosse Ile community and to preserve the natural landscape and environment.

Goals

- Meet the recreation needs of all segments of the Grosse Ile population, including preschool and elementary school children, teens, adults, seniors, persons with disabilities, families and single adults and seniors.
- Design recreation facilities that not only provide recreational opportunities, but also contribute to the aesthetic quality and ecological balance of the Township.
- Foster new relationships and encourage continued cooperation with community groups, volunteers, and specific organizations, including but not limited to the Grosse Ile Public School District, the Grosse Ile Nature Conservancy, the Open Space Committee, private recreation providers, other Township departments and surrounding communities.
- Protect and enhance the value of natural resources within the community for their environmental, educational and recreational benefits.
- Use recreation as a catalyst to bring people together and promote a sense of community pride, health and wellness, and a high quality of life for residents.

Guidelines

The following guidelines assist in implementing the Plan goals. These guidelines are more specific, but can be flexible to accommodate future tasks. The guidelines relate to, programming, facility development, land acquisition, communication, and staffing and operations.

Programming

- Expand programming opportunities for Township residents as new and different facilities become available that will serve residents of all ages, interests, and abilities.
- Work cooperatively with neighboring communities in expanding programming opportunities for residents.
- Further investigate and develop programming that will capitalize on the unique environment of the island through natural resources/environmental classes such as summer day camps,



community gardening, interpretive information/areas, and outdoor classrooms.

- Continue to work cooperatively with school staff and administration in developing year-round programs for students and to offer opportunities outside of school hours.
- Work cooperatively with the equestrian center operators to further develop and provide community-oriented equestrian activities such as single-day events, lessons, shows, and boarding.
- Expand senior programs and services and improve accessibility to technology and transportation.
- Share the uniqueness of Grosse Ile with surrounding communities by advertising and opening programs to both residents and non-residents.

Facility Development

- Ensure that equipment, facilities and amenities are of durable materials that require minimal maintenance.
- Continue to implement solutions to provide for barrier-free access to public recreation facilities.
- Maintain a high quality appearance and informative signage at the parks.
- Prepare for necessary maintenance activities at existing parks and facilities and incorporate proper maintenance planning in conjunction with the establishment of new facilities.
- Expand the diversity of facilities offered at active park areas to maximize the benefit of existing sites.
- Enhance the value of open space areas through nature trail development and educational opportunities.
- Expand the bike path system to improve non-motorized accessibility to the park and recreation system.
- Incorporate a neighborhood park facility on the northern portion of the Township to improve access to park land for these residents.
- Fully explore projects that can improve access to waterfront views and activities for the public.
- Offer open play areas within the parks for informal, active recreation.

Land Acquisition

- Protect natural resources through continued support of the Township open space program.
- Identify properties that would provide a unique conservation or recreational opportunity for the residents of Grosse Ile.



Communication

- Raise community awareness of the Recreation Department offerings, staff, opportunities, and facilities by seeking alternate communication opportunities. These should include use of the Township website, provision of guides and maps at Township Hall, and through use of emerging technologies, such as social networking websites or cable television.
- Implement an organizational system to ensure accurate, timely and comprehensive recognition of organizations, volunteers, and staff.
- Further develop the on-line services to include facility maps/inventory, program registration, interactive calendar of community events/activities to assist in facility use and scheduling.
- Develop and implement a marketing campaign for the Recreation Department that highlights the resources and quality programming and services provided to residents and non-residents alike.

Staffing and Operations

- Continue to provide staff members with educational and training opportunities to meet the needs of the Grosse Ile Recreation Department.
- Strive to be aware of and be a resource for the latest park and recreation trends, events and happenings concerning recreation law, facility development, programming, funding, and other important recreation related topics.
- Provide necessary training for staff concerning customer service, and other important procedural items, to ensure they work efficiently and offer residents high quality service.
- Evaluate and monitor staffing needs that will assist in administering and coordinating programs, facility use, and other tasks that are consistent with the Mission Statement, Goals, Guidelines, and recommendations of this Plan.
- Continue to identify creative opportunities and partnerships for staffing within the Recreation Department, continue to cooperate with local schools, volunteers, teens, seniors, and contract employees, and reach out to any other groups interested in providing recreational facilities, such as local churches and philanthropic organizations.
- Evaluate the need to expand office hours to better serve park and recreation users.
- Continue to foster and further develop a partnering and cooperative relationship with the Grosse Ile Public School District and neighboring communities.
- Coordinate and cooperate with Township departments such as the Department of Public Works, Community Development Department and the Conservation and Open Space Committee to streamline maintenance activities and expenditures.



- Continue to provide administrative and clerical support to the Festival Commission to ensure events are successfully coordinated and beneficial to the community.
- Review the Park and Recreation Master Plan each year to develop an action item list to ensure continual implementation of the goals, guidelines, and improvement recommendations.
- Continue to pursue actively and aggressively all funding sources for the provision of high-quality recreation facilities.
- Continue to position the Recreation Department to accept public contributions, donations, volunteers, and other creative financing resources.

Bike Path and Trail Plan

The following bike path and trail projects implement the guidelines described in this section and are intended to help meet the goals established by the Community Recreation Commission.

Bike Paths

The existing pathway system is comprised of paved trails that are 8 to 10 feet in width. Given the improvements that have been made, the Township should focus on closing pathway gaps, making critical connections, and extending the paths to all areas of the island. It should continue to work with local schools on future Safe Routes to School improvement, and continue development of the township-wide pathway system. Pathway widths shall be decided based on right-of-way limitations and actual field conditions. Specifically, the following bike path extensions, in no particular order, are recommended:

- Douglas Drive from Meridian to Chicory to Grosse Ile Parkway
- Douglas Drive from Meridian to Waterway to Grosse Ile Parkway
- Douglas Drive from Chicory to Waterway
- Parke Lane from Horsemill to O'Donnell
- Bellevue Road from Meridian to Third
- Anderson Drive west of Thorofare
- East River Road from Groh to Hoover's Marina
- East River Road from Groh to Nature Conservancy
- South Pointe Road from Groh to Elbamar
- Meridian Road from Macomb to Douglas
- East River Road from Ferry to Horsemill (east side of road)
- East River Road from Ferry to Horsemill (west side of road)



- Bellevue Road from West River to Meridian
- Grosse Ile Parkway from bridge to Parke
- Meridian Road from bridge to Hennepin Point and Marion Park
- East River Drive from Grays to Grosse Ile Parkway
- South Pointe from Elbamar to the end

The Township created a Bike Path Subcommittee that was recently charged with developing priorities for use of the dedicated bike path millage funds. The Bike Path Subcommittee's priorities for new bike paths include:

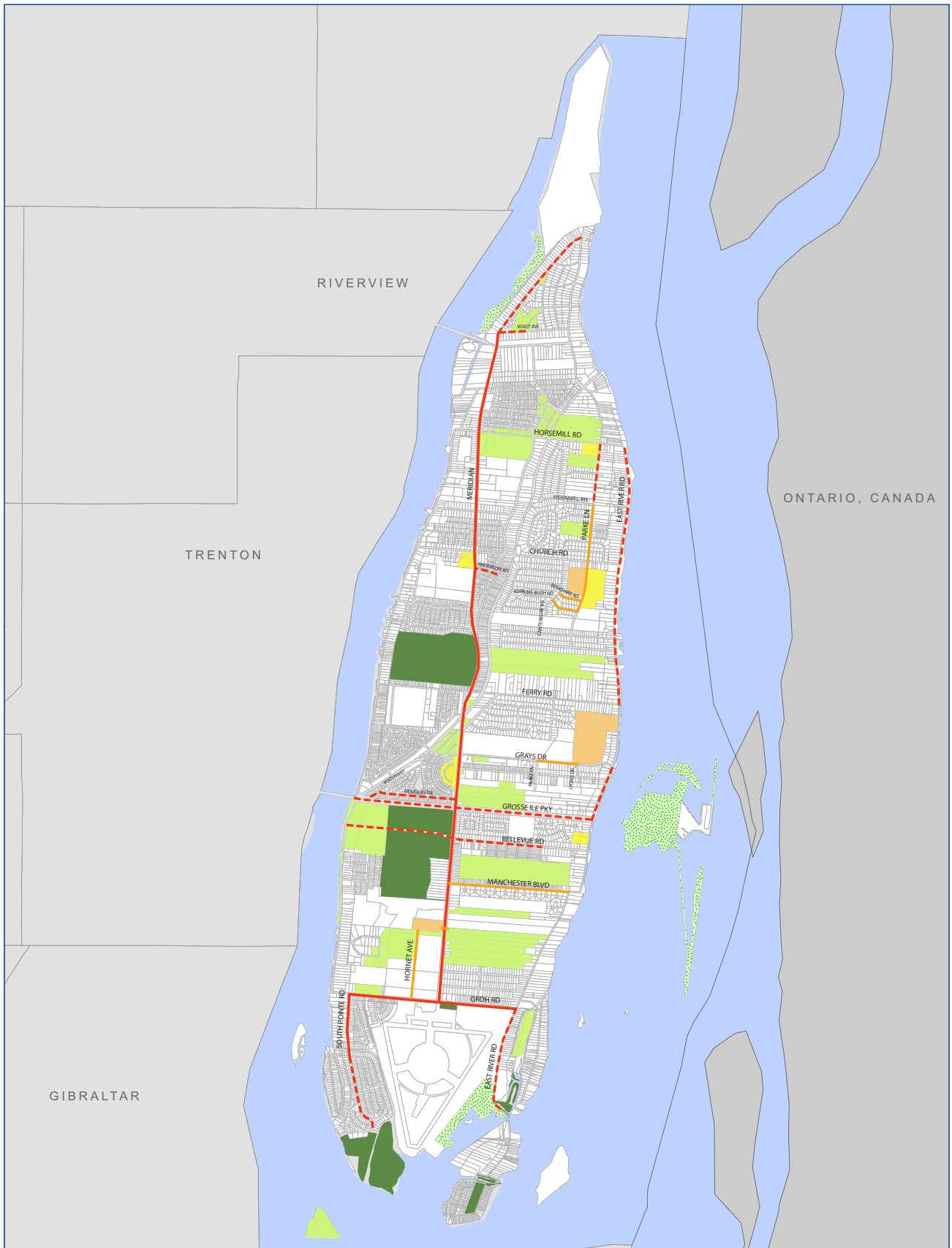
1. Bike Path on the south side of Horsemill, from Meridian to Thorofare
2. Bike Path on the north side of Horsemill, from Thorofare to Parke Lane
3. Bike Path on the east side of East River Road, from Ferry to Church
4. Bike Path on the east side of East River Road, from Church to Horsemill
5. Bike Paths on Grosse Ile Parkway, and clarification of plan to include the routes along Douglas pass, Graves to Chickory, and along Grosse Ile Parkway
6. Bike Path on Parke Lane from Horsemill to O'Donnell

Off-Street Trails

Off-street trails are an excellent source of passive recreation such as hiking, jogging, and nature observation. Off-street trails can be paved or un-paved depending on the intended use, character, and taking into account impacts to the natural features. In either case, as noted in the analysis off-street trails are an excellent way to maximize the benefit of the Township's open space areas in a manner that is compatible with the land and any nearby residents. Specifically, the recommended trail projects are:

- Trail at Parkway Woods open space- Create a loop from Macomb Street, the Community Playscape, and the bike path along Meridian Road
- Trail at Centennial Farm and Woods- Install a trail extension from the Centennial Farm Open Space to the bike path on Meridian Road
- Install other trails in existing open space that will link to bike paths, parks, schools, neighborhoods and maximize benefit and enjoyment of open space areas





Map Three

Bike Path & Trail Plan

Grosse Ile, MI Parks and Recreation

Township Trails

- Completed Trail System
- - - Planned Trail Extensions
- Completed Safe Routes to School Projects

Public Parks & Open Space

- Public
- Private
- Public School
- Private School/Church
- Nature Conservancy



Draft: 12-16-10
Source: MCGI; Grosse Ile Township



LSL Planning, Inc.
Township & Municipal Consulting

Park Specific Recommendations

Upgrades and improvements to the current park system is a high priority to ensure their long-term viability and to meet the goals and guidelines of this Plan. This section contains specific projects for each Township park and recreation facility, based on the goals and guidelines of this Plan.

Airport Recreation Area

The Airport Recreation Area is an active park where many improvements have been made since the last plan. The park now contains 5 soccer fields (for various levels of play) and a sledding hill. Needed improvements include the following:

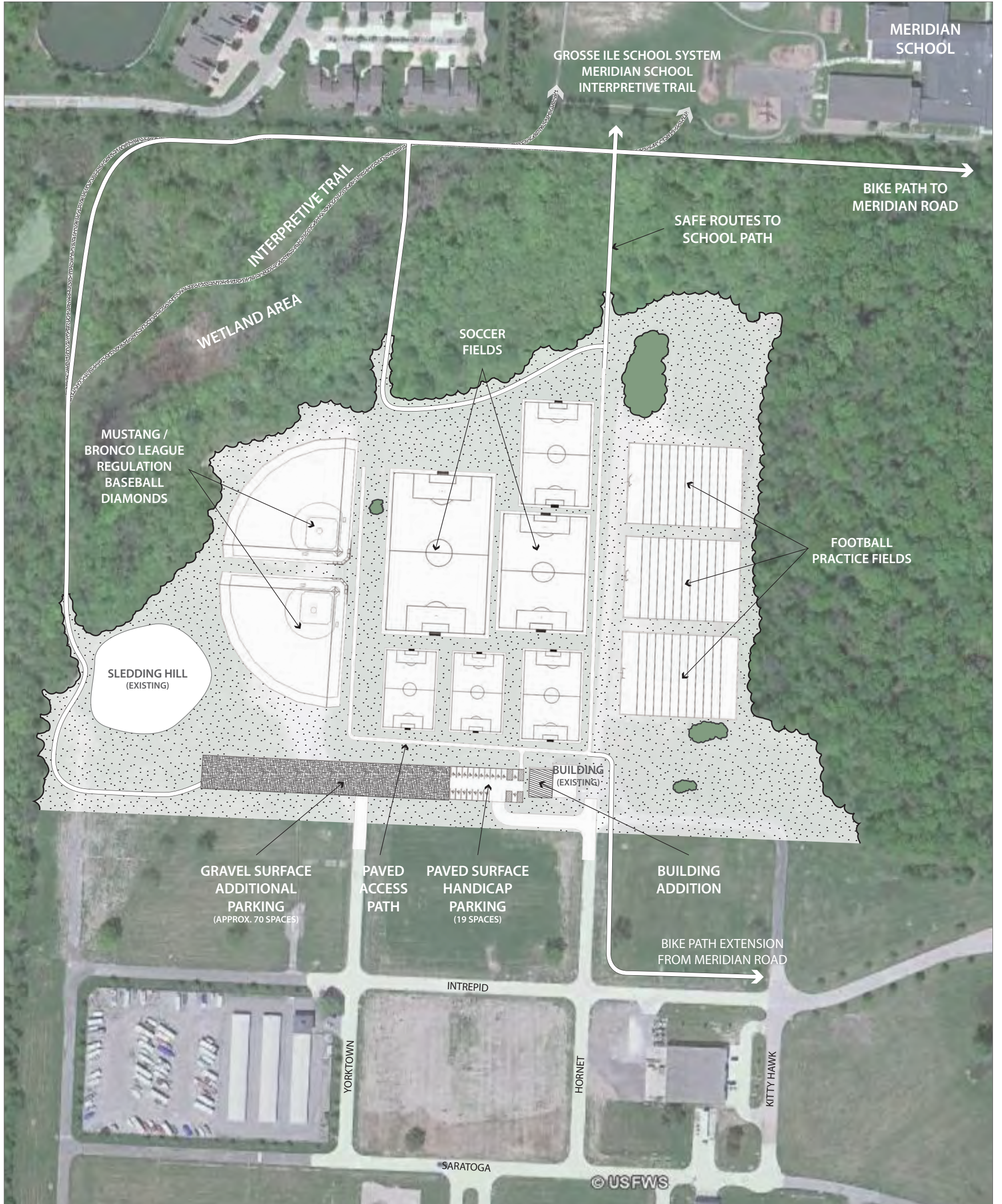
- Installation of one additional soccer field
- Installation of two baseball/softball fields
- Installation of three football fields
- Parking lot/drainage
- Walkways – both internal and connection to non-motorized system
- Picnic shelter
- Building extension for Concession/Storage/Bathrooms
- Additional protective fencing for fields
- Playscape
- Skate park
- Nature trail/overlook
- Lighting (possibly one field that will also light sled hill)

Bertha Park

Bertha Park is an unused site at the north end of the Township that could provide an additional amenity. A conceptual plan would be beneficial to illustrate improved landscaping and signage.



conceptual master plan



DECEMBER 2010



AIRPORT PARK

GROSSE ILE COMMUNITY RECREATION COMMISSION

GROSSE ILE, MICHIGAN

Centennial Farm Park

A number of projects were identified for Centennial Farm. Its unique nature makes it ideal for passive recreation activities that are compatible with the farm and equestrian character of the park. Residents expressed a variety of desires for Centennial Farm, many of which emphasized the need to maximize use of the park for all residents. The challenge will be to balance the community's desire to see full utilization of the park, against the practical considerations needed to ensure longevity of the existing equestrian center. After careful consideration, the CRC has prepared a concept plan for Centennial Farm that incorporates the key improvements that should be made in the next five years. Plans for Centennial Farm may change over time, depending on needs of the current equestrian center and the general public, but the following are the key projects deemed necessary at this time:

- Relocate and expand the dog park, and include separate large and small dog areas.
- Improve stability of overflow parking area to accommodate vehicles during special events.
- Consider creation of a community victory garden.
- Improve trail head with trash bins and informative signage that encourages proper park maintenance and stewardship.
- Develop an accessible (i.e. paved or other durable surface) perimeter walking trail.
- Maintain agricultural structures (coop, barn, silo).
- Continue to research safety upgrades to protect existing structures.
- Improve accessibility at the park, especially for those visiting the equestrian center for therapeutic purposes.

Community Playscape

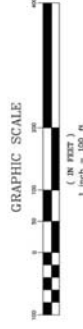
The playscape was a priority project under the previous Recreation Master Plan. The area is in need of new ground cover and a new slide, as well as general maintenance that will upgrade the overall appearance of the site.





LEGEND

- ① EXISTING COMMUNITY BUILDING
- ② EXISTING INDOOR ARENA AND STABLES
- ③ EXISTING ANIMAL SHELTER
- ④ EXISTING BARN
- ⑤ EXISTING SHED
- ⑥ EXISTING STORAGE
- ⑦ EXISTING PAVILION
- ⑧ EXISTING PADDOCK
- ⑨ EXISTING ROUND PEN
- ⑩ EXISTING FEED STATION
- ⑪ EXISTING PLAY GROUND
- ⑫ EXISTING FIRE PIT
- ⑬ EXISTING AND PROPOSED DUMPSTERS WITH ENCLOSURES
- ⑭ EXISTING POND
- ⑮ EXISTING PARKING
- ⑯ PROPOSED PARKING
- ⑰ GREEN SPACE
- ⑱ PROPOSED GAZEBO
- ⑲ ACCESSIBLE PATH SYSTEM
- ⑳ OUTDOOR TERRACE
- ㉑ CONTROLLED DOG PARK ENTRY
- ㉒ SMALL DOG PARK
- ㉓ LARGE DOG PARK
- ㉔ GREEN SPACE
- ㉕ EXISTING PADDOCK
- ㉖ PROPOSED FARM EQUIPMENT DISPLAY AREA
- ㉗ EXISTING HERB GARDEN AREA TO BE EXPANDED
- ㉘ PROPOSED FISHING DOCK
- ㉙ PROPOSED WINDMILL
- ㉚ EXISTING OUTDOOR RIDING ARENA
- ㉛ EXISTING ROSE GARDEN AND BUTTERFLY GARDEN
- ㉜ PROPOSED BIG-SWALE
- ㉝ PROPOSED DECIDUOUS CANOPY TREE
- ㉞ PROPOSED TRAIL HEAD WITH SHADE STRUCTURE
- ㉟ ENHANCED ENTRY
- ㊱ PROPOSED RAIN WATER CATCHMENT CISTERN, TYPICAL FIVE (5) LOCATIONS
- ㊲ ENTRY DRIVE AND VEHICULAR CIRCULATION SYSTEM WITH ACCESSIBLE SURFACE



JANUARY 2011

CENTENNIAL FARM

GROSSE ILE COMMUNITY RECREATION COMMISSION GROSSE ILE, MICHIGAN



conceptual master plan - option 'b'

Gibraltar Bay Nature Center

The Township has completed a number of projects at the nature center area since the last Recreation Master Plan. The primary project identified during the public involvement process for this site is to install observation decks at key locations around the nature center. The decks will take full advantage of the site's unique environment, waterfront views and will help to promote environmental education opportunities. The Land Conservancy already has plans to install new decks at the center.

Marion Park

The public involvement process uncovered a lack of park and recreational facilities accessible by residents at the north end of the Township. Marion Park's northern location in the Township is ideal to meet this need, but is currently unused. The Plan recommends the Township develop a conceptual plan for the site. Improvements could include play equipment, picnic areas, and informal play areas for improved park accessibility at the north end of the Township; however, preservation of the natural wooded areas of the park must be a priority.

Non-Motorized Boat Launch

In response to strong input requesting additional water access for non-motorized boats, the Township maintains a commitment to providing such access. Specific locations and design must still be determined, but the Community Recreation Commission has already begun research into the issue, identifying several possible locations and the barriers and opportunities available at each location. Once the CRC and Township Board have agreed on a preferred location, it will begin the process of planning, design, funding acquisition and construction.

Water's Edge Recreation Area

Throughout the planning process Water's Edge was identified as an integral component to the overall Grosse Ile Parks and Recreation program. The facility currently offers a wide variety of amenities, so it is important to maintain them. The Township developed a conceptual plan for future improvements to the entire Water's Edge Recreation Area to address its expanding use and the action plan gives a timeframe for certain projects, but in general, Water's Edge needs to be maintained and upgraded as opportunities arise.



Because Water’s Edge is one of the Township’s larger parks, the CRC maintains a commitment to fully utilizing the amenities there. Resources should be focused on facilities that can be used for dual or seasonal purposes. For example, the basketball court may be used as an ice skating rink in the Winter. Planned maintenance and upgrades include those listed in the table below:

Priorities for Water’s Edge Recreation Area Improvements			
	Safety & Infrastructure Upgrades	Customer Service Upgrades	Enhancement Upgrades
Golf	<ul style="list-style-type: none"> ▪ Drainage improvements ▪ Safety netting – driving range ▪ Remove dead trees & brush ▪ Slag for cart paths ▪ Replace water line to pond on #9 ▪ Ongoing maintenance & safety upgrades 	<ul style="list-style-type: none"> ▪ Lighting ▪ Building upgrades ▪ Level tees ▪ Improve putting green ▪ Aerate fairways ▪ Plug greens 	<ul style="list-style-type: none"> ▪ Tree pruning & replacement program
Marina	<ul style="list-style-type: none"> ▪ Electrical upgrades ▪ Cement decking & replacement of pilings ▪ Develop phasing program for new transient docks ▪ Extend marina boardwalk ▪ Waterfront pocket park ▪ Ongoing maintenance & safety upgrades (includes water, sewer & electrical) ▪ Painting program 	<ul style="list-style-type: none"> ▪ Pocket park (picnic tables, benches, waste containers and water supply) 	<ul style="list-style-type: none"> ▪ Landscape enhancements
Pool	<ul style="list-style-type: none"> ▪ Bath house flooring safety improvements ▪ Separate chemical storage ▪ Improve accessibility into pools ▪ Paint pool bath house ▪ Ongoing maintenance and safety upgrades 	<ul style="list-style-type: none"> ▪ Pool house and shower room improvements ▪ Upgrade shade canopies 	<ul style="list-style-type: none"> ▪ Landscape enhancements
General	<ul style="list-style-type: none"> ▪ New ADA parking lot ▪ Upgrade existing paved area ▪ Restaurant building (staining project-outer walls) ▪ Restaurant building (rock & mortar repair) ▪ Lighting of new ADA parking area ▪ Install inline skating/ice rink ▪ Lighting for new inline skating rink ▪ Maintenance building upgrades & expansion ▪ Road bore for electricity ▪ Ongoing maintenance & safety upgrades 	<ul style="list-style-type: none"> ▪ Restaurant appliance repair & replacement ▪ Update computer programs and services 	<ul style="list-style-type: none"> ▪ Improve aesthetics at Bellevue crossing ▪ Landscape enhancements ▪ Pathway improvements





D E T R O I T R I V E R

EXISTING PUMP HOUSE AND DISTRIBUTION PANEL TO REMAIN

BOAT LAUNCH / WASH WITH EXISTING TRAVELING HOIST TO REMAIN

COUNTY LAND, EXISTING TO REMAIN AS IS

THOROUGHFARE CANAL: PART OF THE DETROIT HERITAGE WATER TRAIL

OVERLOOK WITH ACCESSIBLE RAMPS DOWN FROM STREET LEVEL

54 BOAT SLIPS (9 NEW)

PARKING (61 CARS)

EXISTING RESTAURANT AND OFFICES WITH EXPANDED DECK

EXISTING POOL

INFORMAL GRASS PICNIC AREA

PHASED TRANSIENT BOAT DOCKS - MAX 42 SLIPS

RELOCATED STARTER HOUSE, TEE BOX FOR DRIVING RANGE

PARKING (10 CARS)

PAVILION - CONCERTS AND WEDDINGS

PARKING (43 CARS) WITH DROP-OFF

EXISTING VOLLEYBALL AND BASKETBALL COURT CONVERT BASKETBALL COURT TO ICE RINK DURING THE WINTER MONTHS

EXISTING MAINT. BUILDING

W River Rd

Grosse Ile Pkwy

W River Access Rd

Waterway Dr

Ruthmere Ave

GRAPHIC SCALE

1" = 100'-0"

09 FEBRUARY 2010
14 DECEMBER 2010
28 JANUARY 2011

WATER'S EDGE PARK

GROSSE ILE COMMUNITY RECREATION COMMISSION

GROSSE ILE, MICHIGAN



Programming Recommendations

A major focus of the public involvement process was the need for increased public awareness of park and recreation facilities and programs. In addition, recreation providers such as the Recreation Department, Grosse Ile Schools, community groups, and volunteer organizations need to improve collaboration and communication to ensure an efficient use of time and resources. Another important component to successful programming is providing adequate accessibility and transportation for both senior and youth programming and events. The Township continues to improve accessibility to park facilities through incorporation of universal design in park plans, and through completion of the Township’s bike path system, which will provide non-motorized travel options for those unable to drive.

While the Township will continue making physical improvements to its parks, another critical component of community recreation is the programming provided. The following programming recommendations should help complete the Township’s existing roster of programs and services provided to the community:

All	Seniors	Adult	Youth
<ul style="list-style-type: none"> ▪ Expand Programs for Individuals with Disabilities ▪ Expand Environmental Education Programs ▪ Public Horseback Riding ▪ Expand Aquatic Programs (All Age Groups) ▪ Expand Sports, Health & Fitness Programs (All Age Groups) ▪ Expand Art and Theatre Programs ▪ Expand Safety Courses (RV, Boating, First Aid) ▪ Lease with GIYRA ▪ Friends of the Barn or Farm 	<ul style="list-style-type: none"> ▪ Expand Golf Tournaments ▪ Expand Senior Programs (New Activities like Pickleball) ▪ Continue to Promote Senior Activities and Travel Program ▪ Continue the Development of Speaker Series for Seniors ▪ Provide Senior Drop Center (Daily Programs) ▪ Expand Senior Van program ▪ Expand van service to full day ▪ Offer affordable travel events ▪ Expand morning walk & daily drop-in programs 	<ul style="list-style-type: none"> ▪ Expand Programming for Single Adults ▪ Continue and Expand Evening Enrichment Activities ▪ Open and Help Maintain School Fitness Room for Community Use ▪ Expand Winter Sports Activities (Example: Cross Country Ski Club) ▪ Expand lifelong learning opportunities 	<ul style="list-style-type: none"> ▪ Develop Student Recreation Advisory Committee ▪ Expand Golf Tournaments ▪ Expand After School Activities ▪ Start 4-H Program ▪ Host Regional Youth Sports Tournaments (Baseball & Soccer) ▪ Implement after school transportation program ▪ Part-time Coordinator to work with associations & groups



Five Year Action Program

The previous section provided a complete listing of all park recommendations. This Five Year Capital Improvement Plan incorporates the top priority recommendations that require financial investment from the Township in the next five years. Priorities should be reviewed on an annual basis and adjusted to respond to updated findings and identification of funding opportunities. Potential funding sources are listed and described in *Appendix C*.

The list of actions is ambitious for two primary reasons. First, the success of the previous five year program has highly motivated the Township to maintain parks and recreation as a funding priority. Secondly, this gives the CRC flexibility to respond to new opportunities. If funding levels are lower than necessary to implement the plan based on the schedule provided, the implementation could be broken into phases and completed over multiple years.

Table 5-1
Five Year Action Program
2011 Projects
<p>Water's Edge Improvements:</p> <ul style="list-style-type: none"> ▪ New ADA parking lot ▪ Upgrade existing parking lot ▪ Restaurant building (staining project-outer walls) ▪ Restaurant building (rock and mortar repair) ▪ Pool bath house (painting) ▪ Level tees on #2, #7 and #9 ▪ Putting green improvement project ▪ Develop phasing program for new transient docks ▪ Ongoing safety upgrades ▪ Marina pilings (replacement and driving)
<p>Centennial Farm Improvements:</p> <ul style="list-style-type: none"> ▪ New Community Garden site plan & program guidelines ▪ Community Garden program development ▪ Reorganize paddocks per conceptual plan ▪ Relocate and expand dog park ▪ Maintain structures (barns, silo, root cellar & coop) ▪ Develop trail layout, educational program and stewardship plan ▪ Ongoing safety upgrades
<p>Airport Recreation Area Improvements:</p> <ul style="list-style-type: none"> ▪ ADA parking lot/drainage ▪ Installation of security and safety fencing ▪ Improve layout of soccer fields ▪ Concession, storage and bathroom improvements ▪ Develop trail layout, educational program & stewardship plan



Table 5-1
Five Year Action Program

<p>Other Activities:</p> <ul style="list-style-type: none"> ▪ Identify non motorized watercraft launch site ▪ Develop first priority bike path improvements along Horsemill from Meridian to Parke Lane ▪ Establish future priorities for bike path improvements ▪ Macomb pocket park development ▪ Begin discussions of indoor sports facility
<p>2012 Projects</p>
<p>Water's Edge Improvements:</p> <ul style="list-style-type: none"> ▪ Waterfront pocket park ▪ Inline Skating/Ice Rink ▪ Install transient dock phase 1 ▪ Upgrade drainage (entire course including ponds) ▪ Ongoing safety upgrades ▪ Marina Pilings (Replacement and Driving)
<p>Centennial Farm Improvements:</p> <ul style="list-style-type: none"> ▪ Community Garden program development ▪ Gazebo (private foundation funding available 50%) ▪ Walkway and trails projects (accessibility to activity areas) ▪ Complete dog park expansion ▪ Continue to maintain structures, including inside of red barn ▪ Improve trail head with trash receptacles & signage ▪ Ongoing safety upgrades
<p>Airport Recreation Area Improvements:</p> <ul style="list-style-type: none"> ▪ Installation of security and safety fencing ▪ Install 2 baseball fields ▪ Paved, ADA compliant walkways ▪ New pavilion/shelter ▪ Improve layout of soccer fields ▪ Concession, storage and bathroom improvements ▪ Trail development w/the conservancy & open space
<p>Other Activities:</p> <ul style="list-style-type: none"> ▪ Develop non motorized watercraft launch site plan (rowing, canoe & kayak) ▪ Develop phase 1 of bike path improvements ▪ Macomb pocket park development ▪ Purchase new van with lift
<p>2013 Projects</p>
<p>Water's Edge Improvements:</p> <ul style="list-style-type: none"> ▪ Install transient dock phase 2 ▪ Complete drainage upgrades ▪ Pool bath house (upgrade bathrooms & shower areas) ▪ Separate chemical storage ▪ Improve accessibility to pools ▪ Extend marina boardwalk ▪ Marina pilings (replacement and driving) ▪ Ongoing maintenance and safety upgrades



Table 5-1 Five Year Action Program
<p>Centennial Farm Improvements:</p> <ul style="list-style-type: none"> ▪ Continue to improve walkway and trails to activity areas ▪ Trail Development - Centennial Farm to Meridian Road with interior loop ▪ Ongoing structure maintenance and safety upgrades
<p>Airport Recreation Area Improvements:</p> <ul style="list-style-type: none"> ▪ New playscape ▪ Trail development with the conservancy & open space
<p>Other Activities:</p> <ul style="list-style-type: none"> ▪ Develop non-motorized boat launch facility ▪ Develop phase 2 of bike path improvements ▪ Macomb pocket park development
<p>2014 Projects</p>
<p>Water's Edge Improvements:</p> <ul style="list-style-type: none"> ▪ Extend marina boardwalk ▪ Marina pilings (Replacement and Driving) ▪ Ongoing safety upgrades
<p>Centennial Farm Improvements:</p> <ul style="list-style-type: none"> ▪ Install turf paver in overflow parking area ▪ Ongoing structure maintenance and safety upgrades
<p>Airport Recreation Area Improvements:</p> <ul style="list-style-type: none"> ▪ Trail development w/the conservancy & open space ▪ Lighting of one soccer field
<p>Other Activities:</p> <ul style="list-style-type: none"> ▪ Continue development of non-motorized boat launch facility ▪ Develop phase 3 of bike path improvements
<p>2015 Projects</p>
<p>Water's Edge Improvements:</p> <ul style="list-style-type: none"> ▪ Extend marina boardwalk ▪ Marina pilings (Replacement and Driving) ▪ Ongoing safety upgrades
<p>Centennial Farm Improvements:</p> <ul style="list-style-type: none"> ▪ Install turf paver in overflow parking area ▪ Ongoing structure maintenance and safety upgrades
<p>Airport Recreation Improvements:</p> <ul style="list-style-type: none"> ▪ Trail development w/the conservancy & open space
<p>Other Activities:</p> <ul style="list-style-type: none"> ▪ Continue development of non-motorized boat launch facility ▪ Develop phase 4 of bike path improvements
<p>Longer Term Projects – 2016 and beyond</p>
<ul style="list-style-type: none"> ▪ Development of Marion & Bertha Parks ▪ Expand open space trails ▪ Construct or renovate an existing facility for indoor sports activities ▪ Identify site for community boat launch ▪ Construct boat launch
<p>Source: Grosse Ile Township</p>





Appendix A: Community Description

It is important to understand the Township's existing conditions in establishing realistic park and recreation goals and objectives. Understanding the regional context of the community, and regional facilities provided, the Township can avoid costly and duplicative recreation efforts, and see where additional facilities are needed. Knowledge of local history can reveal park themes or interesting park amenities. Socioeconomic trends can identify service needs of the community, and the physical realm shapes the whole system. These factors, when considered in their entirety, ultimately leads the community in its decision making process. The following description is intended to provide an understanding of the various socioeconomic characteristics, community history, land use, natural features, and transportation systems in Grosse Ile.

Regional Setting

Grosse Ile Township is a 10.44 square mile island community that is located in southeast Michigan, twelve miles south of Detroit, in Wayne County. The Township consists of many islands positioned at the terminus of the Detroit River and the mouth of Lake Erie. The Detroit River surrounds the Township, forming the Trenton Channel on the west side of the island and an international border with Canada on the east. This location - surrounded by the Detroit River, and proximate to Lakes Erie and St. Clair - have helped to solidify the



element of community, as it influenced the type of development and residents that have evolved over time.

Grosse Ile consists of fifteen islands including Grosse Ile, Hennepin, Calf, Celeron, Swan, Round, Upper Hickory, Lower Hickory, Sugar, Elba, Fox, Mama Juda, Stony and Dynamite. Grosse Ile is the main island, which is actually split in two by the prominent Thorofare Canal that runs in a diagonal east/west direction (see aerial photograph, right). Other inhabited islands include Elba, Swan, and Upper and Lower Hickory.



Historical Overview

Grosse Ile is a distinctive island with a rich history. William and Alexander Macomb, prominent Detroit merchants, purchased the island from the Potawatami Indians on July 6, 1776. The original deed can still be found in the Burton collection at the Detroit Public Library. Early settlers to the island were primarily farmers with farming, fishing and quarry stone as the principal industries. In the early part of the 20th century, Grosse Ile became quite popular as a summer resort for Detroit families. Several prominent automotive pioneers such as or including, R.E. Olds (Oldsmobile), Charles and William Fisher (Fisher Body) and William Knudsen (General Motors) developed large estates on the island. The U.S. Naval Air Station opened on the island in 1929. It was used as a training school, seaplane base and hangar. The Navy kept the base operating until 1967. At that time, the Air Station was closed and turned over to Grosse Ile Township. It now operates as the Grosse Ile Municipal Airport.



Grosse Ile Township has maintained a distinguished and unique charm created in part by the physical characteristics and natural features, which have provided a niche market for its inhabitants. Nowhere else in Wayne County can one find island living of its caliber. Presence of the Detroit River, one of the busiest waterways in the world, has helped shape the social conditions and recreational opportunities present today that only Grosse Ile provides.

Socioeconomic Characteristics

The following is a demographic report provides an understanding of the unique qualities of the local population. Included is an analysis of the age, disability, income and employment characteristics together with household trends of Township residents. These factors help identify current and future needs, allowing the Township to assess whether existing facilities are adequate or need additional amenities and improvements for underserved residents.

Population and Housing Trends and Projections

Like many Michigan suburbs, Grosse Ile Township began as a small community but experienced steady growth until the early 2000's, where populations began a slight decline, in part due to a downturn in the economy. Population and housing trends are summarized in *Table A-1 Population and Housing Trends*.

Grosse Ile	1990	2000	% Change 1990-2000	July 2009 Estimate	% Change 2000-2009	2035
Population	9,781	10,894	11.4%	10,514	-3.6%	11,131
Housing Units	3,632	4,335	19.4%	4,468	2.9%	n/a
Household Size	2.79	2.64	-5.4%	2.53	-4.3%	2.40
Sources: Southeast Michigan Council of Governments (SEMCOG) 2035 Forecast, 1990 & 2000 US Census						

The most current population estimate is provided by the Southeast Michigan Council of Government (SEMCOG), which estimates that as of July 2009 there were 10,514 people living in Grosse Ile Township. This is a slight decrease from 2000 figures, however populations are projected to increase again over the next 20+ years.



The average household size can be an important factor in determining how parks and recreation facilities and programming are provided, as smaller household sizes will disburse residents and thus their need for parks. The average size of Grosse Ile households has steadily decreased over the past, which is consistent with both local and national trends as people are having fewer children and living longer.

Age

As we pass through the various stages of life, our recreational requirements change, resulting in different facility and programming requirements. *Table A-2 Age Distribution* shows the age distribution of the Township in 2000 and projected for 2030.

Table A-2 Age Distribution			
Age Group	# Persons in 2000	# of Persons in 2030	% Change 2000-2030
0-4	527	625	19%
5-17	2,184	2,423	11%
18-34	1,272	1,615	27%
35-64	5,619	6,315	12%
65+	1,292	2,610	102%%
Sources: Southeast Michigan Council of Governments (SEMCOG), 2000 US Census Bureau			

SEMCOG predicts the percentage residents in their family forming years, 18 to 34 years, will increase in the next twenty years, thereby increasing the number of children under 17 years old. This will mean a continued demand for facilities and programming that engage children and families. The most significant change will be in the increase of residents 65 years and older, more than doubling by then. This indicates a strong need to plan recreation for seniors as the baby boomer generation matures and improvements in medical technology help people live longer.

Persons with Disabilities

The proportion of the population with some type of disability should be considered when planning parks and recreational facilities and programs as they may have difficulty gaining access and participating in many recreational activities. The Americans with Disabilities Act of 1990 mandates that all public services, including park facilities, be barrier-free. As the population ages, the proportion with one or more disability generally increases, and this trend is consistent for Grosse Ile. Disabilities include sensory, physical, mental, self-care, go-outside-home, and employment disabilities.

Table A-3 Non-Institutionalized Persons 5 Years and Older with a Disability	
Age Range	2000 Population
Age 5-20	4.4%
Age 21-64	10.6%
Age 65+	34.2%
Source: 2000 US Census Bureau	



Table A-3 *Non-Institutionalized Persons 5 Years and Older with a Disability* shows, for various age categories, the proportion of the non-institutionalized population older than 5 years with one or more disability. In 2000, 12% or 1,261 persons aged 5 years or older were classified as having a disability in Grosse Ile Township. The largest percentage of the disabled population is those people over the age of 65.

Income

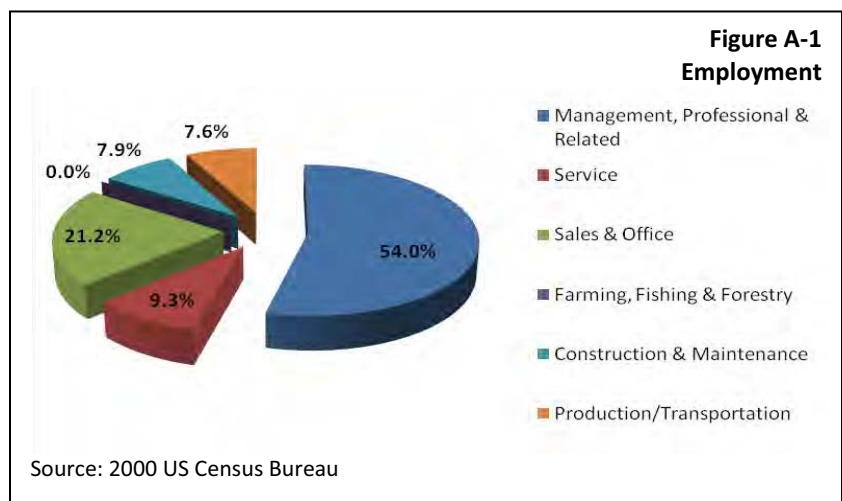
A successful parks and recreation program requires providing affordable recreational opportunities to the community. As incomes vary within a community and a region, so too does the notion of affordability and availability of disposable income for recreation. Table A-4 *Median Household Income* shows that residents of the Township earn significantly more than county and state residents overall. In fact, the median household income of Grosse Ile is more than twice that of Wayne County.

Area	Income
Grosse Ile Twp.	\$87,062
Wayne County	\$40,776
State of Michigan	\$44,667

Source: 2000 US Census Bureau

Employment

Residents of Grosse Ile are employed in a range of employment categories. As shown in Figure A-1 *Employment*, over half of Township residents are in management or professional jobs and almost another quarter are in sales or office occupations. The strength of the employment picture in Grosse Ile suggests that residents should be able to continue to fund the parks and recreation budget.



Physical Characteristics

Understanding the physical characteristics of Grosse Ile Township, including land use, natural features, and the transportation network is important when identifying potential park and recreation improvements. The location of parks needs to consider adjacent land use to avoid conflicts with neighboring residential uses or be subject to impacts from nearby industrial or commercial uses. They should respect existing natural features, or appropriately incorporate them into a theme or educational opportunity. Transportation systems are critical to providing access for nearby residents. Access routes, whether motorized or non-motorized, will help shape the type of residents that will use the park, as well as necessary improvements needed to serve them.

Land Use

The land use distribution and development pattern of a community is important when considering the geographic distribution of parks and recreational facilities because they should be placed where there are concentrations of residents and the related places of public gathering.

Grosse Ile is predominantly a residential community with significant amounts of open space, woodland and wetland areas. There is limited office and commercial, which is primarily located on Macomb Street. A large portion of the southern side of the Township is occupied by the Grosse Ile Municipal Airport and the adjoining industrial park. According to SEMCOG, the Township consists of approximately 5,392 total acres. As noted above, the predominant land uses are single family residential, which accounts for 45% and open space, woodland and wetland areas, which account for approximately 32%. Cultural and outdoor recreation uses comprise approximately 8% of the Township's acreage, while institutional land uses, including public and semi-public, comprise approximately 3%.

Natural Features

Wetlands, woodlands, and water bodies in the Township, described below, provide substantial park and recreational opportunities.

Wetlands. Grosse Ile Township contains significant wetland areas due to its location on the Detroit River. Over 300 acres of the Township are



considered wetland areas. Three types of wetlands are predominate in Grosse Ile Township that are of significant importance to recreation planning due to their size and location. Some of the more notable include Gibraltar Bay, Thorofare Canal, shoreline areas, Celeron Island, Stony Island and Sugar Island.

- **Emergent Wetlands.** Found along the shoreline and sheltered waterways. Rooted cattails, bulrushes and sedge grasses are predominate in the emergent areas.
- **Forested Wetlands.** Found near emergent wetlands and dominated by swamp oak, red ash, silver and red maple and black willow trees with an understory of shrubs.
- **Submersed Aquatic Beds.** This type of wetland can be found near shorelines and in sheltered bays around the Township and support fish and waterfowl.

Woodlands. Recreational planning could serve as a tool for management and preservation in woodland areas. One of the most important woodland sites in the Township is Round Island. The Ford Yacht Company owns Round Island and placed it on the Natural Features Registry of the Michigan Nature Conservancy. However, the Registry is voluntary and offers no real protection or legal obligations.

Over several years and multiple millages, the Township has acquired several hundred acres of wooded, undeveloped land that is open and accessible to the public. These open space properties were acquired for the purpose of preservation and with the intention that they remain as natural woodlands and wetlands, habitats for both native fauna and flora, and free from the impacts of intruding development. These sites were not acquired for recreational parkland except for the most passive of uses.

Transportation

Grosse Ile's transportation system affects the accessibility of parks and recreational facilities. The Township is accessible by two bridges that cross the Trenton Channel, the Grosse Ile Toll Bridge (Bridge Road) at the north end of the island and the Wayne County Free Bridge (Grosse Ile Parkway) to the south. The Grosse Ile Toll Bridge is a privately owned and operated bridge to the island. Meridian Road is the main north/south route through the center of the Township. Grosse Ile Parkway is the key east/west road that is centrally located on the island. Two



other important streets, West and East River Roads, encircle the outside border of the island. Macomb Street, which is an east/west street just north of Grosse Ile Parkway, maintains the majority of the local businesses.

There are two possible access points to I-75, which is the main north/south expressway for the Detroit area. Both bridges to the Township connect with Jefferson Avenue, a major north/south thoroughfare along the shore of the Detroit River. From Jefferson Avenue, I-75 can be accessed from West Road or Eureka Road.

Alternative methods of travel are available for Grosse Ile residents. A van program is available for seniors, low-income and disabled residents that is administered by Grosse Ile Township Recreation Department. The services, which are offered Monday through Friday, provide transportation to and from the community center, Township offices, medical and dental appointments, hair appointments, pharmacy, banking, and shopping. In addition, the development of comprehensive non-motorized pathway system has begun and is a priority for future investments within the Township. Future plans must continue to focus on safe pedestrian access, and improving transportation options.





The process to develop the Grosse Ile Parks and Recreation Master Plan involved a series of public meetings so the Community Recreation Commission could obtain comments about needed and desired park and programming improvements; discussion of comments received is included throughout the Plan. The community of Grosse Ile has many organized groups and clubs that provided input into this process. In total, the following groups were represented at the meetings held:

- Grosse Ile Herb Society
- Evening Garden Club
- Senior Citizens Club
- Grosse Ile Animal Shelter
- TAILS
- Grosse Ile Historic Society
- Boy Scout Troop 1261
- Safe Routes to School
- Ice Rink
- Water's Edge Golf Sub-Committee
- Grosse Ile Soccer Association
- Grosse Ile Rotary
- Grosse Ile Township Board
- Grosse Ile Rowing
- WRYCC
- Grosse Ile Fire Department
- Grosse Ile Athletic Department
- Grosse Ile Natural and Land Conservancy
- Open Space
- P.A.T.
- Student Council
- Grosse Ile Alliance
- Grosse Ile CPC
- Community Recreation Commission
- CRC Chair
- GITS



Focus Groups

The public involvement began with focus group meetings held the evening of November 18th, 2009. The Community Recreation Commission, along with Recreation Department staff and planning consultants met with a number of pre-selected groups to gain a better understanding of the recreational needs of the Township. Four sets of focus groups attended: 1) the Environmental/Outdoor group; 2) the Arts, Music and Recreation group; 3) the Community Involvement group; and 4) the Athletic, Fitness and Health group.

Park Workshops

Two park specific workshops, one for Centennial Farm and one for Waters Edge were held on November 19, 2010 in order to collect input on park plans from residents and interest groups. The workshops were advertised to the general public through various sources within the Township, and invitations were sent to key stakeholder groups throughout the community.

Public Review Period

The draft Parks and Recreation Master Plan was available for public review at the Grosse Ile Township Hall and Community Center, during normal business hours, starting on December 27, 2010. Notification of the review period was published in the Ile Camera on December 24, 2010.

Public Hearing

The Community Recreation Commission held a public hearing on January 27, 2011. Notification of the review period was published in the Ile Camera on December 24, 2010. Minutes from the meeting are included on the following page.



Notice of Public Review and Public Hearing Grosse Ile Township Parks and Recreation Master Plan 2011-2015

Notice is hereby given that the Grosse Ile Township Community Recreation Commission will hold a public hearing on Thursday, January 27, 2011 at 7:30 p.m. in the Board Room (second floor) located at Grosse Ile Township Hall, 9601 Groh Road, Grosse Ile, MI 48138.

The purpose of the public hearing is to receive public comments on the proposed Grosse Ile Township Parks and Recreation Master Plan 2011-2015. A parks and recreation master plan assists the Township and specifically the Recreation Department in identifying recreation needs within the community. The plan ultimately determines the most effective and efficient methods of improving the existing facilities, programs and properties as well as providing facilities, programs and properties beyond those that currently exist. While a Parks and Recreation Master Plan assists the community in determining its long-range goals and needs, if approved by the Michigan Department of Natural Resources & Environment (MDNRE), it also qualifies the community for recreation grants which are administered through the MDNRE. The proposed Parks and Recreation Master Plan includes a community description, an overview of the administrative structure of the Recreation Department, an inventory and analysis of the existing recreation facilities, and finally recommended goals, guidelines and projects proposed to be funded for the next five years.

The hearing is intended to provide an opportunity for interested citizens to express their opinions regarding the proposed Parks and Recreation Master Plan.

Copies of the proposed Grosse Ile Township Parks and Recreation Master Plan will be available for review at the Grosse Ile Township Hall, 9601 Groh Road and Community Recreation Department, 25215 West River Road, during normal office hours as of Monday, December 27, 2010. The proposed Parks and Recreation Master Plan will be available through the Township website at www.grosseile.com no later than Friday, December 24, 2010

Those unable to attend the public hearing are invited to submit written comments to the attention of the Chairperson of the Community Recreation Commission at the Township Hall address cited above.

Grosse Ile Township will provide necessary, reasonable auxiliary aids and services at the public hearing to individuals with disabilities. Individuals with disabilities requiring auxiliary aids or services should contact the Grosse Ile Township Clerk at least two days prior to the hearing.

**Ute O'Connor
Clerk**

Publish December 24, 2010

GROSSE ILE COMMUNITY RECREATION COMMISSION MINUTES
January 27, 2011, Township Board Room—Televised 7:33-9:05 p.m.
And
Grosse Ile Township Parks and Recreation Master Plan 2011-2015
Public Hearing

Attendance—Commissioners: PRESENT: Walt Kacher (Chairperson), Lea Schelke (Secretary), John Conroy, Bill Morreau Helene Woodward-Ryan, Ethel Yops, Mike Swales. EXCUSED: Agran Ziberi, GIPS Student Liaison, Greg Meyring.

Attendance—Township Representatives:
Tim Rooney (Community Recreation Director)
Ute O'Connor (Twp. Board Liaison to CRC)

Attendance—Consultants:
Brian Borden, Senior Planner, LSL Planning, Inc.
Sherrin S. Hood, Senior Planner, LSL Planning, Inc.
Marc R. Russell, Russell Design, Inc.

Community Members:

01. Chair Kacher called the **CRC to order** at 7:38 and led the CRC in the **Pledge of Allegiance**.
02. **Approval of Agenda:** Moreau moved approval of the Agenda as presented; Swales seconded; approved.
03. **Minutes of CRC Meeting December 16, 2011:** Schelke move approval as printed; Yops seconded; approved as printed.
04. **Public Comment (3 Minute limit on non-agenda items)**
No one presented.

Grosse Ile Township Parks and Recreation Master Plan 2011-2015
Public Hearing

01. **Introductions:** Chair Kacher introduced the following people: Sherrin S. Hood, LSL Planning with Brian Borden and Marc Russell who collaborated with CRC in development of the “Master Plan 2011-2015” draft. Hood reviewed the process and outlined the “Master Plan 2011-2015.
02. **Presentation of draft for *Grosse Ile Township Parks and Recreation Master Plan 2011-2015***: Hood reviewed the GI process compared with MDNR&E (State requirements) and outlined the “Master Plan 2011-2015.”
 - The “Master Plan” is needed for CR work and grant application.

- Goals for the next 5 years—similar to previous “Master Plan.”
- Inventory and analysis of GI community and recreation resources such as parks and other GI destinations.
- 35-64 is the largest age group, which provides guidance for CR programming and use of resources.
- Incorporated more discussion of Bike Paths along with Centennial Farm, Waters Edge, Airport Park RC area, and CR programming.
- Modified, updated each site (AP, WE, CF) plus looking for path and trail connections among the CR locations that will attract more people to use them.
- Signage for trails and paths is included.

03. **CRC Members Comments and Questions:** The Commissioners commented and questioned as follows:

- Morreau asked for clarification about the location of the Community Garden at the CF.
- O’Connor asked about parking at Water’s Edge. Marc explained the change from the chipping area and the driving range—fewer parking spaces. He also explained that this is a concept plan and can be adjusted as necessary. Accessibility is key to grants, as they show the Township’s intent. Can eliminate or add something new with details in final planning.
- Morreau suggested that the parking in the current plan would impact the landing of golf balls from the Driving Range onto the 8th fairway.
- O’Connor suggested adding “potential” or “optional” be added to emphasize that the “Master Plan” is optional. Marc and Sherrin said they could add “conceptual master plan” on each map/plan to reinforce.
- O’Connor reported that the “sledding hill” is used year round and asked that such wording be added to the text. Sherrin will look at text and drawing.
- Kacher asked about the football field at Airport Park Concept. Sherrin and Tim will double check.
- Woodward-Ryan explained Centennial Farm Sub Committee concerns: Put Community Garden somewhere the soil is good. Leave Dog Park where it is and add a small dog park. Parking suggestions concerning people from Herb Garden and horses /barns. Russell explained the changes—reduced parking spaces number. How can we discourage auto traffic between the barns?
- The Community Garden will be included in the text and designs.
- Kacher asked about ice rink/in-line skating at Water’s Edge. Russell said that the concept is there, but the land is not quite right between basketball and volleyball courts.
- O’Connor asked that the text include fact that currently ice rink is on the basketball court.

04. **Public Comment and Questions:** The Planers and CRC members responded to the following:
- Paige Miller complimented Rooney and CRC on the development of “The Master Plan.”
 - Her major interest is the CF and the Equestrian Center, as her daughter and her friends are regular visitors. Paige also sees many other people enjoying CF activities.
 - Bit concerned about the community garden and its development, especially those proposals that impact the Equestrian Center space—cutting paddock space, shrubs between the barns, farm implement display, petting zoo etc. Questioned who the people are that made these proposals; I’ve never heard them or these ideas at meetings that I’ve attended. She objects to those items being put into the plan and drawings. Kacher explained that people attended the meeting and made these suggestions. Those ideas are included in the “conceptual designs.”
 - O’Connor asked that the tone be calmed down and explained that these plans are conceptual. The items in the plan may not happen. She reviewed history of previous plans. As details for the concepts are developed, that becomes a lease issue to be negotiated between the Lutons and the Township officials.
 - Miller asked for improved communication among all the groups that use the CF. She stated, "I still don’t understand how some of the ideas made it to the 'Master Plan.'" As long as the number of horses at the EC stays the same, she’s okay with whatever CRC does.
 - Sandy Bondar, looking at the CF revised “Conceptual Design” expressed concern about the parking right at the arena and safety concern. Victory Garden, why not at Airport? How about next to the “Little Dog Park?”
 - Rooney and O’Connor reminded the CRC that any individual/group that wants to do something at CF must follow the process and present to the CRC and/or Township for approval.
 - Rob Luton commented that the proposed garden is a former manure area, great place for a garden
 - He asked about the earlier plan to pave the entire path area of CF. Where is it? He sees people struggling with walking around the farm, around the barn, and other EC areas. Russell explained that it is there (19). He wouldn’t even mind paving around the Animal Shelter. It’s a safety issue for the boarders as well as regular visitors.
 - Kacher and O’Connor suggested that the CF safety/signage issue needs to be addressed as soon as possible.
 - Luton reminded the CRC that the horses are the major attraction at CF. The jewel of CF is that kids can go to a safe area and spend time. It’s a reason people have moved to GI.

- Morreau asked if the paving could be done in stages. Russell reminded that it has to be an accessible covering—universal accessibility. When final plans are completed, that will be addressed.
- Luton asked about paddock availability and explained rotation for grass renewal. Could the “Little Dog Park” be cut in half? Moved into the current “Big Dog Park?” I can help with this too. Time for attending meetings is tight; maintaining farm and family are priorities.
- Cindy Vinier thanked the Lutons for allowing her to visit the farm. She urged that the CRC to consider the EC before any major changes. Some paving would pay for itself over the years. Hang onto the Red Barn. If it should be destroyed, she suggested adding stalls and removing stumps for an additional paddock. Kacher reminded her that the fire marshal insists on access to the CF structures. O’Connor assured that any petting zoo would not negatively impact the EC.
- Cindy suggested looking at grants for environmental sound energy funds.
- O’Connor asked if 31 is the Rosie Meyer’s Rose Garden. Russell will correct on the design. The Butterfly Garden was approved by CRC.
- Woodward-Ryan asked for clarification from Luton about the paving material he’s proposing for the CF. He wants the paths covered for safety reasons. Russell explained the difference and price cost of various path-paving materials.

05. **Summary of Meeting and Hearing:** Chair Kacher and Sherrin Hood summarized the meeting and Master Planning process. The items mentioned this evening will be incorporated into the text and designs in the *Grosse Ile Township Parks and Recreation Master Plan 2011-2015*

06. **CRC Recommendation:** Schelke moved that the Grosse Ile Township Community Recreation Commission endorses and recommends to the Township Board adoption of the ***Grosse Ile Township Parks and Recreation Master Plan 2011-2015*** as amended at the Public Hearing January 27, 2011; seconded by O’Connor; approved as presented.

Hood said that LSL will send changes to Rooney for CRC review.

Russell asked for clarification about the paddock vs. petting zoo issue

Morreau moved that the CRC adjourn; Woodward-Ryan seconded. The CRC meeting and Public Hearing were adjourned by Chair Kacher at 9:20 p.m.

Respectfully submitted,

E. Lea Schelke, Commissioner and Secretary
January 27, 2011



Township of Grosse Ile

9601 GROH ROAD
P.O. BOX 300
GROSSE ILE, MICHIGAN 48138

GENERAL OFFICES (734) 676-4422
FAX (734) 676-7433
WEB SITE: www.grosseile.com

CERTIFIED RESOLUTION

TOWNSHIP OF GROSSE ILE BOARD OF TRUSTEES

At a regular meeting of the Board of Trustees of the Township of Grosse Ile, County of Wayne, State of Michigan, held in said Township, on February 28, 2011, during which the following named Board Members were present: Supervisor Loftus, Clerk O'Connor, Treasurer Van Os, Trustees Frucci, Johnson, Kantz and Ranka Members Absent: None

On a motion by Clerk O'Connor, second by Trustee Johnson, based on the recommendation of the Grosse Ile Community Recreation Commission, the Grosse Ile Township Board of Trustees hereby adopts the 2011-2015 Grosse Ile Township Parks and Recreation Master Plan according to the following Resolution.

WHEREAS, development of a quality parks and recreation facilities requires a proactive plan based on a combination of community input, analysis of existing conditions, analysis of the basic needs for current and future residents, parks and recreation planning expertise, as well as a prioritized improvements program and potential funding opportunities; and

WHEREAS, the foundation of the plan is established with the Mission Statement, Goals, and Guidelines; and

WHEREAS, the plan provides text, concept plans, and maps of detailed recommendations for park and recreation facilities, and recreation programming with a prioritized list of capital improvements for the next five years; and

WHEREAS, the Grosse Ile Township Community Recreation Commission, Township Board and Township staff along with the assistance of LSL Planning, Incorporated, has prepared the Parks and Recreation Master Plan for Grosse Ile Township which includes all the above elements; and

WHEREAS, said plan meets the requirements of the Michigan Department of Natural Resources and Environment, thereby making the Township eligible for State and Federal grants administered by the Michigan Department of Natural Resources and Environment; and

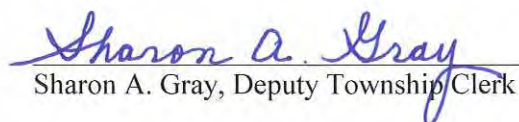
WHEREAS, the Township followed a planning process that focused on public involvement, including public workshops and focus group meetings with stakeholders and recreation providers for the purpose of soliciting community input on said plan; and

WHEREAS, a Public Hearing was held by the Community Recreation Commission on the final draft on January 27, 2011; and

WHEREAS, the Community Recreation Commission adopted a Resolution to endorse and recommend adoption of said plan;

NOW THEREFORE, BE IT RESOLVED, THAT THE Grosse Ile Township Board of Trustees hereby adopts the 2011-2015 Grosse Ile Township Parks and Recreation Master Plan, dated February 28, 2011. **Resolution Adopted 7-0**

I hereby certify that the foregoing is a true and complete copy of a resolution adopted by the Board of Trustees of the Township of Grosse Ile, County of Wayne, Michigan, at a regular meeting held on February 28, 2011, and that said meeting was conducted and public notice of said meeting was given pursuant to and in full compliance with the Open Meetings Act, being Act 267, Public Acts of Michigan, 1976, and that the minutes of said meeting were kept and will be or have been made available as required by said Act.


Sharon A. Gray, Deputy Township Clerk

**Grosse Ile Township
Community Recreation Commission
Resolution of Endorsement
for the
Parks and Recreation Master Plan**

January 27, 2011

WHEREAS, development of adequate parks and recreation facilities requires a pro-active plan based on a combination of community input, analysis of existing conditions, analysis of the basic needs for current and future residents, parks and recreation planning expertise, as well as prioritized improvements programs and potential funding opportunities; and

WHEREAS, the foundation of the plan is established with the Action Program consisting of overall goals and supporting objectives and specific Action Program for the next five years; and

WHEREAS, the plan provides recommendations for park and recreation facilities, and recreation programming with a prioritized list of capital improvements for the next five years; and

WHEREAS, the Grosse Ile Township Community Recreation Commission and Township staff along with the assistance of LSL Planning, Inc. has prepared the Grosse Ile Township Parks and Recreation Master Plan which includes all the above elements; and

WHEREAS, said plan is represented to meet the requirements of the Michigan Department of Natural Resources, thereby making the Township eligible for State and Federal grants administered by the Michigan Department of Natural Resources; and

WHEREAS, Grosse Ile followed a planning process that contained public involvement, including focus group meetings and public workshops with stakeholders and recreation providers for the purpose of soliciting community input on said plan; and

WHEREAS, a public hearing was held by the Community Recreation Commission on the final draft January 27, 2011.

NOW THEREFORE, BE IT RESOLVED, that the Grosse Ile Township Community Recreation Commission hereby endorses and recommends to the Township Board adoption of the Grosse Ile Township Parks and Recreation Master Plan.





LSL Planning, Inc.

Community Planning Consultants

March 4, 2011

Ms. Beverly Watts
Wayne County, Director of Parks
33175 Ann Arbor Trail
Westland, MI 48185

Subject: Grosse Ile Township Parks and Recreation Master Plan

Dear Ms. Watts,

On behalf of the Grosse Ile Township, we are pleased to submit for your records the locally adopted Parks and Recreation Master Plan. The plan was endorsed by the Community Recreation Commission on January 27, 2011 and adopted by the Township Board on February 28, 2011.

Should you have any questions or require additional assistance, please contact Timothy Rooney, Recreation Supervisor (734) 675-2364.

Sincerely,

LSL PLANNING, INC.

A handwritten signature in cursive script that reads "Sherrin S. Hood".

Sherrin S. Hood, AICP
Senior Planner

Enclosure

cc: Timothy Rooney, Recreation Supervisor



LSL Planning, Inc.

Community Planning Consultants

March 4, 2011

Grants Management
Michigan Department of Natural Resources and Environment
PO Box 30425
Lansing, MI 48909-7925

Subject: Grosse Ile Township Parks and Recreation Master Plan

To Whom It May Concern,

On behalf of the Grosse Ile Township, we are pleased to submit for your records the locally adopted Parks and Recreation Master Plan. The plan was endorsed by the Community Recreation Commission on January 27, 2011 and adopted by the Township Board on February 28, 2011.

Should you have any questions or require additional assistance, please contact Timothy Rooney, Recreation Supervisor (734) 675-2364.

Sincerely,

LSL PLANNING, INC.

A handwritten signature in cursive script that reads "Sherrin S. Hood".

Sherrin S. Hood, AICP
Senior Planner

Enclosure

cc: Timothy Rooney, Recreation Supervisor



LSL Planning, Inc.

Community Planning Consultants

March 4, 2011

Mr. Bill Parkus
Southeast Michigan Council of Governments
535 Griswold St., Suite 300
Detroit, MI 48226

Subject: Grosse Ile Township Parks and Recreation Master Plan

Dear Mr. Parkus,

On behalf of the Grosse Ile Township, we are pleased to submit for your records the locally adopted Parks and Recreation Master Plan. The plan was endorsed by the Community Recreation Commission on January 27, 2011 and adopted by the Township Board on February 28, 2011.

Should you have any questions or require additional assistance, please contact Timothy Rooney, Recreation Supervisor (734) 675-2364.

Sincerely,

LSL PLANNING, INC.

A handwritten signature in cursive script that reads "Sherrin S. Hood".

Sherrin S. Hood, AICP
Senior Planner

Enclosure

cc: Timothy Rooney, Recreation Supervisor

THIS PAGE LEFT INTENTIONALLY BLANK





The scope of recreation improvements proposed for the Five Year Action Program can be financed through a combination of resources. Aside from the general fund, these potential sources are described below.

Bikes Belong Coalition

The Bikes Belong Grants Program strives to put more people on bicycles more often by funding important and influential projects that leverage federal funding and build momentum for bicycling in communities across the U.S. They seek to assist local organizations, agencies, and citizens in developing bicycle facilities projects. Bikes Belong Coalition accepts applications for grants quarterly for up to \$10,000 each, and will consider successor grants for continuing projects. For more information, visit their website at www.bikesbelong.org/grants

Coastal Zone Management

The Coastal Management Program is administered through the Department of Environmental Quality (MDEQ) and provides grants and technical assistance to coastal communities to promote effective coastal management. Applications are due each year in April with a \$50,000 maximum and a 100% local match. For more information, visit their website at www.michigan.gov/deq/0,1607,7-135-3313_3677_3696---,00.html



Great Lakes Fishery Trust (GLFT)

GLFT provides grant funds to nonprofit organizations and government entities for the following purposes:

- Research projects that benefit Great Lakes fishery resources
- Rehabilitation of lake trout, lake sturgeon and other Great Lakes fish species
- Protection and enhancement of Great Lakes fisheries habitat
- Public education about the Great Lakes fishery
- Property acquisition for the above purposes or to provide access to the Great Lakes

Grant award amounts and deadlines vary by project. For more information, visit their website at www.glft.org

Inland Fisheries Grant Program

The primary objectives of this MDNR program is to protect, maintain and/or enhance inland aquatic environments that support (or are capable of supporting) a significant public fishery; to rehabilitate degraded inland fish communities on waters that support (or are capable of supporting) a significant public fishery; to provide additional or more diverse fishing opportunities on inland waters that support (or are capable of supporting) a significant public fishery; to foster educational and interpretive communications and interest in inland fish, fishing, and fisheries management when those communications and interests serve to protect, maintain, enhance, or rehabilitate the populations and habitat of fish and other forms of aquatic life. Projects that are beneficial to the people of Michigan, inland fisheries resources, and meet one or more of the program objectives are eligible for funding. Maintenance activities and operational costs are not fundable. The maximum available is \$30,000 per project. Applicants must demonstrate they can contribute at least 50% of the project's cost as a match of the State grant. Applications are due in March. For more information, visit their website at http://michigan.gov/dnr/0,1607,7-153-10371_10402-186539--,00.html

Land and Water Conservation Fund (LWCF)

LWCF provides funding assistance for communities to acquire and develop land for outdoor recreation. The minimum award is \$15,000 and the maximum of \$500,000 with a 50% local match. The eligibility criterion emphasizes preservation of natural resources such as waterways.



This grant is ideal for land acquisition that is intended for passive recreation and open space in the future. Applications are due in April. For more information, visit their website at www.nps.gov/lwcf

Michigan Natural Resources Tree Planting Grants

Through the Michigan Department of Natural Resources (MDNR), there are two tree planting grant programs that will assist in funding landscape enhancements at the parks and re-forestation projects. Applicants must provide at least 50% of the total project cost.

- **Urban Community Forestry Program- Arbor Day Mini-Grants.** This mini-grant program is designed to provide information and technical assistance to municipal governments and volunteer groups for urban and community forest activities related to Arbor Day. Applications are due in July with maximum grant requests of \$20,000. For more information, visit their website at www.michigan.gov/dnr/0,1607,7-153-10366_37984_38165-128813--,00.html
- **Urban Community Forestry Program.** This program provides the same services as above plus management plans, inventories and maintenance activities. These activities do not have to be related to Arbor Day. Applications are due in July with maximum grant requests of \$20,000. For more information, visit their website at www.michigan.gov/dnr/0,1607,7-153-10366_37984_38165-126153--,00.html

Michigan Natural Resources Trust Fund (MNRTF)

MNRTF provides funding assistance for the purchase of land (or interests in land) for recreation or protection of land because of its environmental importance or scenic beauty, and the development of recreation facilities. This assistance is directed at creating and improving outdoor recreational opportunities and providing protection to valuable natural resources. The improvement grants are between \$15,000 and \$500,000 with a required minimum local match of 25%. Acquisition grants vary depending upon the value of property and local match amount; therefore there is not a minimum or maximum amount. This grant is ideal for implementing park plans and for land acquisition. Applications are due in April and September of each year for acquisition projects and April of each year for development projects. For more information, visit their website at www.michigan.gov/dnr/0,1607,7-153-10366_37984_37985-124961--,00.html



Waterways Program Grant

The Waterways Program Grant is administered through the Department of Natural Resources (MDNR) from the Michigan State Waterways Fund to provide for design and construction of recreational boating facilities. Application deadline is April of each year with funding policy to grant up to 50% of the project cost with equal local match. For more information, visit their website at www.michigan.gov/dnr/0,1607,7-153-10366_37984_37985-124962--,00.html

Wetland Program Development

The goals of the Environmental Protection Agency's wetland program and the Clean Water Action Plan are to increase the quantity and quality of wetlands in the U.S. by conserving and increasing wetland acreage, and improving wetland health. State, tribal, and local governmental agencies, interstate, intertribal, and local government associations are eligible to receive grant funds. Applications are due in the fall with a required 25% minimum local match. For more information, visit their website at www.epa.gov/owow/wetlands/grantguidelines

Arbor Day Foundation

Becoming a member of the Arbor Day Foundation will provide the Township with additional resources related to tree planting and maintenance. Grosse Ile should investigate becoming a designated Tree-City USA, which provides additional advantages towards park enhancement projects. For more information, visit their website at www.arborday.org

Great Lakes Basin Program for Soil Erosion and Sediment Control

The Basin Program seeks to improve Great Lakes water quality by promoting erosion and sediment control and sound land-use practices through information/education, demonstration grants, technical assistance and coalition building in the Great Lakes states. Applications are due in January with maximum grant requests of approximately \$25,000. For more information, visit their website at www.glc.org/basin



User Fees

Grosse Ile must continue to charge reasonable fees to participants of recreation programs. The Township should evaluate the fees annually to ensure they are providing the appropriate amount of funding to allow the programs to continue.

Recreation Bond

A number of bond programs can be used to finance construction of parks and recreation facilities. General Obligation Bonds are issued for specific community projects, such as park improvements and park land acquisition, and may not be used for other purposes. These bonds are usually paid for with property tax revenues. Revenue Bonds are issued for construction of public projects that generate revenues. The bonds are then retired using income generated by the project.

Special Millage

A property tax millage can be used to finance specific park and recreation projects such as park development, pathway improvements and facility upgrades. A millage is an effective method to divide costs over time amongst all the taxpayers in the community to provide matching grant funds or finance projects out-right. A millage allows more flexibility in how the money is used than a bond.

Conservation Easements

A conservation easement is a method of preserving open space that is guaranteed through formal documentation. This technique can also be used to preserve open space if it is not feasible or practical for Grosse Ile to acquire the land. Rather than obtaining fee simple, or complete ownership, an organization or community can purchase or acquire by gift an 'easement' to the property.

Public-Private or Public-Public Partnerships

Reduced funding at the public and private sector has created a need for various partnerships between public and private entities as well as between two or more public entities to accommodate specialized large-scale recreation demands.



Donations

Businesses, corporations, private clubs, community organizations, and individuals will often contribute to recreation and other improvement programs to benefit the communities in which they are located. Private sector contributions may be in the form of monetary contributions, the donation of land, the provision of volunteer services, or the contribution of equipment or facilities.

Foundations

A foundation is a special non-profit legal entity that is established as a mechanism through which land, cash, and securities can be donated for the benefit of parks and recreation services. The assets are disbursed by the foundation Board of Directors according to a predetermined plan.

